

SLRM/ENV/2024-25/26
Date: 23.11.2024

To,
Deputy Director General of Forests (C)
Ministry of Environment, Forest & Climate Change (MoEFCC)
Regional Office (Southern Zone), 4th Floor, E&F Wings
Kendriya Sadan, 17th Main Road, IInd Block, Koramangala,
Bangalore - 560 034

Sir,

Sub: Submission of six monthly EC compliance report for the period of **April 2024 to September 2024** wrt **M/s. SLR Metaliks Limited**, ND Kere & Lokappanahola Villages-583 222, HB Halli Taluk & Vijayanagara District, Karnataka.

Reference: ECs issued by MoEFCC, GOI vide Letter No. J-11011/766/2008-IA II-(I) dated 30-08-2010

~****~

Referring to the above subject, we hereby submit the point wise Environmental Compliance Report (ECR) to the conditions stipulated in the Environment Clearance granted under reference, in respect of **M/s. SLR Metaliks Limited**, ND Kere & Lokappanahola Villages, HB Halli Taluk & Vijayanagara District, Karnataka. Point wise compliance for the period from **April 2024 to September 2024** is attached as Appendix-1 to this letter along with annexure and submitted in Soft copy to rosz.bng-mefcc@gov.in and also uploaded in Parivesh portal.

Kindly acknowledge the receipt of the same

Thanking You

Yours faithfully
For **SLR Metaliks Limited**



Authorised Signatory

Encl: a/a



Corporate Office :

519, Phase V , Udyog Vihar,
Gurugram -122016(Haryana)
T : +91-124-4071892 / 93 / 94
E : gurgaon_office@sirm.in

www.sirmetaliks.com
www.sirm.co.in

Works :

Sy. No. 632, 636, Narayandevarakere,
Village : Lokappana Hoia, Tq. H.B. Halli,
Dist Vijayanagara - 583 222, Karnataka.

T : +91-08394-294061
E : info@sirm.co.in

CIN No. U27106DL2005PLC142596

Regd. Office:

A-2/452, Sec-8, Rohini,
New Delhi-110085
E : infodel@sirm.co.in

STATUS OF CONSTRUCTION OF PROJECTS

Sl. No	Product	Capacity granted in EC	Capacity constructed	Construction status	Remark
EC -1					
1	Pig Iron / hot metal from 262 m3 Mini Blast Furnace (MBF)	2,00,000 TPA	2,00,000 TPA	Completed	In operation
2	Sinter Plant (33 m2 circular sinter machine)	3,31,000 TPA	3,31,000 TPA	Completed	In operation
3	Power Plant (BF Gas based)	6MW	6MW	Completed	In operation
EC-2					
4	SMS (Billets)	3,00,000 TPA	3,00,000 TPA	Completed	In operation
5	Pulverized coal	10 TPH	10 TPH	Completed	In operation
6	Rolled steel products	3,20,000 TPA	3,20,000 TPA	Completed	In operation
7	Coke oven	1,20,000 TPA	NIL	Under Construction	Under Construction
8	Off gas based power plant	9MW	NIL		
9	Oxygen Plant	120 TPD	120 TPD	Completed	In operation
10	Producer gas plant	15000Nm3/h	NIL	Not implemented	-
Amendment to EC:					
11	RHF: Furnace oil to BF Gas	-	-	Implemented	In operation
12	Change of Fuel in 6MW power Plant: BF Gas to Coal	-	-	Not implemented	Will be dropped due to non-viability
13	Reduction capacity of Producer gas: 15000 Nm3/h to 5500 Nm3/h	-	-	Not implemented	

~~~\*\*~~~

**NAME AND CONTACT DETAILS OF THE RESPONSIBLE PERSON WITH RESPECT TO THE SUBMITTED REPORT**

**Name** : **Mahantesh GV**  
**Designation** : Asst. Manager- EHS  
**Address** : SLR Metaliks Limited  
 Narayandevarakere, Lokappanahola Village,  
 Hagaribommanahalli Taluk & Vijayanagara District  
**Mobile** : +919449871560  
**Landline** : 08394- 294061 ext: 333  
**Email** : [environment@slrm.in](mailto:environment@slrm.in)  
**Web** : [www.slrm.co.in](http://www.slrm.co.in)

**UPDATED CONTACT DETAILS OF THE PROJECT PROPONENT:**

**Proponent** : **Vinod BS**, Additional Director & Occupier  
**Contact no.** : 08394- 294061 ext: 100  
**Email** : [vinodbs@slrm.in](mailto:vinodbs@slrm.in)  
**Web** : [www.slrm.co.in](http://www.slrm.co.in)

**COMPANY REGD. OFFICE:**

A2/452, Sector 8, Rohini,  
 New Delhi-110085  
 Contact no: +91-11-2794-0168, 2794 1354  
 email: [infodel@slrm.co.in](mailto:infodel@slrm.co.in), Web: [www.slrm.co.in](http://www.slrm.co.in)

**Appendix-1**

Point wise Compliance to Conditions of EC granted by MOEFCC, Government of India in respect Establishment of Pig Iron Plant (262 m3 MBF - 2,00,000 TPA) along with Sinter Plant (33 m2) and Captive Power Plant (6 MW) of M/s. SLR Metaliks Limited (SLRM) at Sy. No. 632 & others at Village Narayandevarakere, Hagaribommanhalli Taluk, Ballari / Vijayanagara District, Karnataka, vide Reference Letter J-11011/766/2008-IA II-(I) dated 30<sup>th</sup> August 2010.

| SN                             | CONDITIONS                                                                                                                                                                                                 | COMPLIANCE                                                                                                                                                                                                                                                                                                                                                                                                                                                                                                                                                                                                                                                                                                                                                                                                                                                                                        |
|--------------------------------|------------------------------------------------------------------------------------------------------------------------------------------------------------------------------------------------------------|---------------------------------------------------------------------------------------------------------------------------------------------------------------------------------------------------------------------------------------------------------------------------------------------------------------------------------------------------------------------------------------------------------------------------------------------------------------------------------------------------------------------------------------------------------------------------------------------------------------------------------------------------------------------------------------------------------------------------------------------------------------------------------------------------------------------------------------------------------------------------------------------------|
| <b>1.0 SPECIFIC CONDITIONS</b> |                                                                                                                                                                                                            |                                                                                                                                                                                                                                                                                                                                                                                                                                                                                                                                                                                                                                                                                                                                                                                                                                                                                                   |
| i                              | Electrostatic precipitator (ESP), dust catcher, cyclone separators, bag filters etc., shall be provided to keep the emission levels below 50 mg/Nm <sup>3</sup> by installing energy efficient technology. | <p>SLR Metaliks Limited is committed to protecting the environment and has adopted the best available technology to prevent pollution from its production operations.</p> <p>Installed following Air pollution control equipment's @ MBF &amp; Sinter Plants</p> <p>Electro Static Precipitators (ESP) - 2 nos.<br/>           Dust catcher - 1 no.<br/>           Settling chamber - 1 no.<br/>           Dry Gas cleaning plant - 1 nos.<br/>           Bag filter - 3 nos.</p> <p>All of the above systems are periodically maintained to keep emission levels below 50 mg/Nm<sup>3</sup>. Stack emissions are monitored on a fortnightly basis to ensure compliance with permissible standards. Additionally, online Continuous Emission Monitoring System (CEMS) instruments have been installed for major process stacks, and the emission results are well below 50 mg/Nm<sup>3</sup>.</p> |
| ii.                            | The national ambient air quality standards issued by the ministry vide G.S.R. No.826(E) dated 16 <sup>th</sup> November 2009 should be followed.                                                           | <p>Ambient air quality is being monitored in accordance with NAAQM standards. Four Ambient Air Quality Monitoring (AAQM) stations have been established in all directions around the plant, in consultation with KSPCB, considering major downwind directions and receptor villages. This monitoring is conducted using conventional methods, and the monitoring report is submitted to KSPCB every month. The cumulative average report is attached as <b>Annexure-1</b>.</p> <p>SLRM also installed one CAAQM station on the eastern boundary of the plant and the data is connected to CPCB server in real time.</p> <p>The data can be accessed from the following link<br/> <a href="https://glens.glensserver.com/#/login">https://glens.glensserver.com/#/login</a></p>                                                                                                                    |
| iii.                           | Secondary fugitive emissions from all the sources shall be controlled within the latest permissible limits issued by the ministry vide G.S.R 414 (E) dated 30 <sup>th</sup> May,                           | <p>The GSR 414 (E) is applicable for sponge iron industry, we are operating blast furnace unit however, Secondary fugitive emissions are controlled by providing the following facilities</p> <ul style="list-style-type: none"> <li>➤ All internal roads and approach from NH to plant</li> </ul>                                                                                                                                                                                                                                                                                                                                                                                                                                                                                                                                                                                                |

|     |                                                                                                                                                                                                                                                                                                                    |                                                                                                                                                                                                                                                                                                                                                                                                                                                                                                                                                                                                                                                                                                                                                                                                                                                                                                                                |
|-----|--------------------------------------------------------------------------------------------------------------------------------------------------------------------------------------------------------------------------------------------------------------------------------------------------------------------|--------------------------------------------------------------------------------------------------------------------------------------------------------------------------------------------------------------------------------------------------------------------------------------------------------------------------------------------------------------------------------------------------------------------------------------------------------------------------------------------------------------------------------------------------------------------------------------------------------------------------------------------------------------------------------------------------------------------------------------------------------------------------------------------------------------------------------------------------------------------------------------------------------------------------------|
|     | <p>2008 and regularly monitored. Guidelines / code of practice issued by the CPCB shall be followed.</p>                                                                                                                                                                                                           | <p>are concreted for a length of 12.62 km.</p> <ul style="list-style-type: none"> <li>➤ 10500 m<sup>2</sup> of coke storage yard is fully concreted</li> <li>➤ Haul roads on the iron ore yards are continuously sprayed water to suppress the fugitive emission.</li> <li>➤ Conveyor Junction houses are provided with bag filters to control the fugitive emission</li> <li>➤ Return fines hopper is provided with dry fog system to suppress the fine dust emission.</li> <li>➤ A porous fence for an eight of 4 meters is erected on the boundary of raw material storage yard.</li> <li>➤ Iron ore and coal heaps are covered with tarpaulin to prevent dust emission during high winds.</li> </ul> <p>Fugitive emission is being monitored at 5 locations on monthly basis and the emission levels are well within the permissible limits.</p> <p>Attached fugitive emission cumulative report as <b>Annexure-2.</b></p> |
| iv. | <p>Total water requirement from Tungabhadra reservoir shall not be exceed 1,432.5 m<sup>3</sup>/ day and permission from the surface irrigation department shall be obtained for the drawl of water. This water consumption shall not exceed as per the prescribed standards for steel plants.</p>                 | <p>SLRM has obtained permission from Water resource department and Karnataka Niravari Nigam Limited (KNNL) government of Karnataka to draw water from Tungabhadra reservoir.</p> <p>Per day Water consumption is less than 1432.5m<sup>3</sup>/ day for Sinter Plant MBF and BF Gas based Power plant. Water is being used optimally at all processes.</p>                                                                                                                                                                                                                                                                                                                                                                                                                                                                                                                                                                     |
| v.  | <p>‘Zero’ effluent discharge shall be strictly followed and no waste water shall be discharged outside the premises. Efforts shall be made to make use of rain water harvested. If needed. Capacity of the reservoir should be enhanced to meet the maximum water requirement shall be met from other sources.</p> | <p>SLR Metaliks limited is an alloy steel manufacturing plant. The water being used only for cooling and quenching purpose. No waste water is generated from the process. The reject water from DM plant and cooling tower blow down is being used for slag granulation at Blast furnace. All make up water is lost through evaporation. Hence, no generation of effluent from the process.</p> <p>The domestic waste water generated from washrooms and toilets are being treated in Sewage treatment plant and the treated water is used for gardening and plantations.</p> <p>The storm water is also collected in guard pond located on the lowest gradient of the plant and the</p>                                                                                                                                                                                                                                       |

|      |                                                                                                                                                                                                                                                                                                                                                                                                                                                                       |                                                                                                                                                                                                                                                                                                                                                                                                                                                                                                                                                                                                                                                                                                                                                                                           |
|------|-----------------------------------------------------------------------------------------------------------------------------------------------------------------------------------------------------------------------------------------------------------------------------------------------------------------------------------------------------------------------------------------------------------------------------------------------------------------------|-------------------------------------------------------------------------------------------------------------------------------------------------------------------------------------------------------------------------------------------------------------------------------------------------------------------------------------------------------------------------------------------------------------------------------------------------------------------------------------------------------------------------------------------------------------------------------------------------------------------------------------------------------------------------------------------------------------------------------------------------------------------------------------------|
|      |                                                                                                                                                                                                                                                                                                                                                                                                                                                                       | collected water is reused back into process for slag granulation. <b>Zero liquid discharge is adopted.</b>                                                                                                                                                                                                                                                                                                                                                                                                                                                                                                                                                                                                                                                                                |
| vi.  | Regular monitoring of influent and effluent surface, sub-surface and ground water shall be ensured and treated waste water shall meet the norms prescribed by the State Pollution Control Board or described under the Environment (Protection) Act, 1986 whichever are more stringent. Leachate study for the effluent generated and analysis shall also be regularly carried out and report submitted to the ministry's Regional Office at Bangalore SPCB and CPCB. | As stated above the effluent generated from various units is re-circulated and recycled. No waste water is generated from the process and Zero discharge is maintained.<br><br>2 samples of Surface water, 4 samples of Groundwater, 2 samples of STP treated water and 2 samples of Guard pond water are being monitored on monthly basis. The slag generated from the MBF and EOF is being sold to GGBFS manufacturers and brick manufacturers respectively. No waste is stored in the premises and also no waste effluent is generated in our process. Hence, there is no leachate generation and leachate analysis is not applicable.                                                                                                                                                 |
| vii. | All the Blast furnace (BF) slag shall be granulated and provided to cement manufacturers for further utilization. Accretion shall also be properly utilized.                                                                                                                                                                                                                                                                                                          | The granulated slag generated from Blast furnace is sold to Ground granulated Blast furnace slag (GGBFS) manufacturer and cement manufacturer. No slag is left for land filling.                                                                                                                                                                                                                                                                                                                                                                                                                                                                                                                                                                                                          |
| Viii | Proper utilization of fly ash shall be ensured as per Fly ash Notification, 1999 and subsequent amendment in 2003 and 2010. All the fly ash should be provided to cement and brick manufacturers for further utilization and Memorandum of Understanding should be submitted to Ministry's Regional office at Bangalore.                                                                                                                                              | The power plant is based on blast furnace gas, there is no fly ash generated in our industry. Hence, the fly ash notification is not applicable.                                                                                                                                                                                                                                                                                                                                                                                                                                                                                                                                                                                                                                          |
| iX.  | Vehicular pollution due to transportation of raw material and finished products shall be controlled. Proper arrangements shall also be made to control dust emissions during loading and unloading of the raw material and finished product.                                                                                                                                                                                                                          | Following measures are undertaken to control fugitive emission from transportation of raw material and finished products. <ul style="list-style-type: none"> <li>➤ All transport vehicles are covered with tarpaulins while transporting</li> <li>➤ The transport of finished product doesn't generate dust.</li> <li>➤ All internal roads and approach from NH to plant are concreted for a length of 12.62km.</li> <li>➤ 10500 m<sup>2</sup> of coke storage yard is fully concreted</li> <li>➤ Haul roads on the iron ore yards are continuously sprayed water to suppress the fugitive emission.</li> <li>➤ A porous fence for an eight of 4 meters is erected on the boundary of raw material storage yard.</li> <li>➤ Iron ore and coal heaps are covered with tarpaulin</li> </ul> |

|      |                                                                                                                                                                                                                                                                                                                       |                                                                                                                                                                                                                                                                                                                                                                                                                                                                                                                                                                                                                                                                                                                                                                                                                                                                                                        |
|------|-----------------------------------------------------------------------------------------------------------------------------------------------------------------------------------------------------------------------------------------------------------------------------------------------------------------------|--------------------------------------------------------------------------------------------------------------------------------------------------------------------------------------------------------------------------------------------------------------------------------------------------------------------------------------------------------------------------------------------------------------------------------------------------------------------------------------------------------------------------------------------------------------------------------------------------------------------------------------------------------------------------------------------------------------------------------------------------------------------------------------------------------------------------------------------------------------------------------------------------------|
|      |                                                                                                                                                                                                                                                                                                                       | to prevent dust emission during high winds.                                                                                                                                                                                                                                                                                                                                                                                                                                                                                                                                                                                                                                                                                                                                                                                                                                                            |
| X.   | All the recommendations made in the charter on Corporate Responsibility for Environment Protection (CREP) for the steel plants should be implemented.                                                                                                                                                                 | <p>All the CREP recommendations applicable for blast furnace like Energy recovery of top Blast Furnace (BF) gas is implemented</p> <p>100% of generated BF gas is utilized in various applications like, as fuel in Power plant, fuel for burner in Sinter machine &amp; Fuel for Re-heating furnace of Rolling mill. No excess gas is available to flare off.</p> <p>Granulated slag is sold to GGBFS manufacturers and cement plants. The used oil generated from gears, hydraulic machine and diesel engine are inventoried as per Hazardous Wastes. Continuous stack monitoring system. Use of Tar-free runner linings. Processing of the waste containing flux and ferrous wastes through waste recycling at Sinter plant. Promotion of energy Optimization technology including energy/audit. Objective targets are set for raw material, energy, water consumption and monitored regularly.</p> |
| xi.  | All the commitments made to the public during the Public Hearing / Public Consultation meeting held on 16 <sup>th</sup> February 2010 shall be satisfactorily implemented and a separate budget for implanting the same should be allocated and information submitted to the Ministry's Regional Office at Bangalore. | <p>Based on the commitments made during the public hearing/ public consultation and the recommendations from the PH proceedings the action plan was prepared and implemented all the recommendations.</p> <p>PH recommendations and actions are already implemented and complied.</p>                                                                                                                                                                                                                                                                                                                                                                                                                                                                                                                                                                                                                  |
| xii. | Proper handling, storage, utilization and disposal of all the solid waste shall be ensured and regular report regarding toxic metal content in the waste material and its composition, end use of solid / hazardous waste should be submitted to the ministry's Regional Office at Bhopal, CECB and CPCB.             | <p>SLRM has ensured all the wastes generated in the process are scientifically disposed without harming to the environment.</p> <p>The granulated slag from the Blast furnace is 100% sold to GGBFS &amp; cement manufacturers.</p> <p>For the period of April-2024 to September-2024, total 49,783 tons of BF Slag was generated and sold completely. No slag is stored in the premises.</p> <p>Other domestic wastes, garden wastes and garbage from un packing of tools and equipment's are segregated at source. The segregated waste having paper, plastic, wood and card boards are sold to vendors. Garden wastes are used for compost and the manure is utilized for greenbelt development. There is no generation of hazardous toxic waste.</p>                                                                                                                                               |

|           |                                                                                                                                                                                                                                                                                                                                           |                                                                                                                                                                                                                                                                                                                                                                                                                                                                                                                                                                                                                                                                                                                                                                                     |
|-----------|-------------------------------------------------------------------------------------------------------------------------------------------------------------------------------------------------------------------------------------------------------------------------------------------------------------------------------------------|-------------------------------------------------------------------------------------------------------------------------------------------------------------------------------------------------------------------------------------------------------------------------------------------------------------------------------------------------------------------------------------------------------------------------------------------------------------------------------------------------------------------------------------------------------------------------------------------------------------------------------------------------------------------------------------------------------------------------------------------------------------------------------------|
| xiii.     | A time bound action plan shall be submitted to reduce solid waste its proper utilization and disposal.                                                                                                                                                                                                                                    | <p>SLRM has Sinter plant, where it is called as recycle in of the steel plant. All the wastes generated in the process like, GCP dust, dust catcher dust, iron ore fines, coke fines etc., are reused back in the sinter plant for sinter making.</p> <p>As mentioned in the condition no., xii granulated slag is sold 100%. As of now, no waste is dumped or used for land fill in the plant.</p>                                                                                                                                                                                                                                                                                                                                                                                 |
| xiv.      | Risk and Disaster Management Plan along with the mitigation measures shall be prepared and a copy submitted to the ministry's Regional Office at Bhopal, CECB and CPCB within 3 months of issue of environment clearance letter.                                                                                                          | On Site Emergency plan addressing these issues is already prepared and approved by Director of Factories & Boilers, Govt. of Karnataka vide SLRM/S&E/E/ECC-Nov-14 dated 28/11/2014 and also revised vide letter no. CSMC/MHC/CR-04/24-25 dated 07-05-2024. Copy of same was already submitted to the ministry's regional office.                                                                                                                                                                                                                                                                                                                                                                                                                                                    |
| xv.       | As proposed, green belt shall be developed in 33% of plant area as per the CPCB guidelines in consultation with DFO.                                                                                                                                                                                                                      | <p>SLRM has developed an extensive green belt in and around the plant and planted around 98,282 nos. of saplings covering an extent of 82 acres out of total 234 acres resulting in 35% coverage.</p> <p>At the locations having good soil, SLRM has planted 8 different native species, saplings procured from local forest dept.</p> <p>All the saplings are selected in consultation with the local forest department and planted. However, few areas of the plant is located on the rocky area having not suitable for cultivation, tree samplings are showing lower growth. Hence, shallow rooted saplings like conocarpus erectus are planted spreading 1-2 feet layer of soil on the rock.</p> <p>Attached an photographs of the plantation as <b><u>Annexure-3.</u></b></p> |
| xvi.      | The Company shall provide housing for construction labour within the site with all necessary infrastructure and facilities such as cooking, mobile toilets, mobile STP, safe drinking water, medical health care, crèche, etc., The housing may be in the form of temporary structures to be removed after the completion of the project. | <p>The said facilities were provided during the construction phase.</p> <p>Now the Construction has already completed and plant is in operation.</p>                                                                                                                                                                                                                                                                                                                                                                                                                                                                                                                                                                                                                                |
| <b>B.</b> | <b>GENERAL CONDITIONS:</b>                                                                                                                                                                                                                                                                                                                |                                                                                                                                                                                                                                                                                                                                                                                                                                                                                                                                                                                                                                                                                                                                                                                     |

|      |                                                                                                                                                                                                                                                                                                                                                                                                                                    |                                                                                                                                                                                                                                                                                                                                                                                                                                                                                              |
|------|------------------------------------------------------------------------------------------------------------------------------------------------------------------------------------------------------------------------------------------------------------------------------------------------------------------------------------------------------------------------------------------------------------------------------------|----------------------------------------------------------------------------------------------------------------------------------------------------------------------------------------------------------------------------------------------------------------------------------------------------------------------------------------------------------------------------------------------------------------------------------------------------------------------------------------------|
| i.   | The project authorities must strictly adhere to the stipulations made by the Karnataka State Pollution Control Board and the State Government.                                                                                                                                                                                                                                                                                     | Agreed and being complied                                                                                                                                                                                                                                                                                                                                                                                                                                                                    |
| ii.  | No further expansion or modifications in the plant shall be carried out without prior approval of the Ministry of Environment and Forests.                                                                                                                                                                                                                                                                                         | Agreed. Any changes required in the plant is being made with due approval of the ministry.                                                                                                                                                                                                                                                                                                                                                                                                   |
| iii. | The gaseous emissions from various process units shall conform to the load/mass based standards notified by this Ministry on 19 <sup>th</sup> May, 1993 and standards prescribed from time to time. The State Board may specify more stringent standards for the relevant parameters keeping in view the nature of the industry and its size and location                                                                          | All the gaseous emissions are confirming to KSPCB & MOEFCC stipulated standard. And the emission norms are prescribed time to time are complied.                                                                                                                                                                                                                                                                                                                                             |
| iv.  | At least four Ambient Air Quality Stations should be established in the downward direction as well as where maximum ground level concentrations of PM <sub>10</sub> , SO <sub>2</sub> and NO <sub>x</sub> are anticipated in consultation with SPCB. Data on ambient air quality and stack emission shall be regularly submitted to this Ministry including its Regional Office at Bangalore and the SPCB/CPCB once in Six months. | SLRM has established total 5 nos. of ambient air quality monitoring stations. 4 nos. are with conventional sapling and 1 no. of Online air quality monitoring station.<br><br>All the stations are established in consultation with KSPCB & monitoring is being done as per CPCB guidelines. Data on ambient air quality & stack monitoring is submitted regularly to KSPCB & MoEFCC office Bangalore.<br>Cumulative report of Ambient air quality report is enclosed as <b>Annexure-1</b> . |
| v.   | Industrial Waste water shall be properly collected, treated so as to conform to the standards prescribed under GSR422 (E) dated 19 <sup>th</sup> May, 1993 and 31 <sup>st</sup> December, 1993 or as amended from time to time. The treated waste water shall be utilized for plantation purpose.                                                                                                                                  | SLRM has adopted zero liquid discharge. There is no waste water generated in the process.<br>Details are already given in specific condition no V.                                                                                                                                                                                                                                                                                                                                           |
| vi.  | The overall noise levels in and around the plant area shall be kept well within the standards (85 dBA) by providing noise control measures including acoustic hoods, silencers, enclosures etc on all sources of noise generation. The ambient noise levels should conform to the standards                                                                                                                                        | Noise control measures such as silencers and enclosures etc., have been provided at the source of noise generation.<br><br>ie., silencer for steam exhaust at power plant & Silencer for snort valve at MBF provided. Blowers are mounted inside the building with covered in all sides                                                                                                                                                                                                      |

|       |                                                                                                                                                                                                                                                                                                                                                        |                                                                                                                                                                                                                                                                                                                                                                                                                                                                                                                                                                                                                                                                                                                                                                                                                                                                                                                                                   |
|-------|--------------------------------------------------------------------------------------------------------------------------------------------------------------------------------------------------------------------------------------------------------------------------------------------------------------------------------------------------------|---------------------------------------------------------------------------------------------------------------------------------------------------------------------------------------------------------------------------------------------------------------------------------------------------------------------------------------------------------------------------------------------------------------------------------------------------------------------------------------------------------------------------------------------------------------------------------------------------------------------------------------------------------------------------------------------------------------------------------------------------------------------------------------------------------------------------------------------------------------------------------------------------------------------------------------------------|
|       | prescribed under EPA Rules, 1989 viz. 75 dBA (daytime) and 70dBA (night time).                                                                                                                                                                                                                                                                         | <p>to control the noise. Acoustic enclosures are provided for the DG sets to ensure noise levels are well within the limit.</p> <p>Noise levels are being monitored during day and night time both in work zone and ambient area. The results are well within the limit.</p> <p>Attached noise monitoring report as <b>Annexure-4.</b></p>                                                                                                                                                                                                                                                                                                                                                                                                                                                                                                                                                                                                        |
| vii.  | Occupational health surveillance of the workers shall be done on a regular basis and records maintained as per the factories Act.                                                                                                                                                                                                                      | <p>As per the requirement of Factories and Karnataka Factories rules, Pre-employment medical examination is done before appointment and also regular annual Medical examination is carried out for all the employees and workers. Records are maintained.</p> <p>A sample copy of the periodical medical examination is attached as <b>Annexure-5.</b></p>                                                                                                                                                                                                                                                                                                                                                                                                                                                                                                                                                                                        |
| viii. | The company shall develop surface water harvesting structures to harvest the rainwater for utilization in the lean season besides recharging the ground water table.                                                                                                                                                                                   | <p>Roof top rain water harvesting and bore well recharge systems are provided 2 bore wells.</p> <p>Storm water is also channelized to settling tanks followed by guard pond, so that, water collected in the guard pond is reused back into the process to reduce the fresh water consumption.</p> <p>Attached photographs showing rain water harvesting and guard pond as <b>Annexure-6.</b></p>                                                                                                                                                                                                                                                                                                                                                                                                                                                                                                                                                 |
| ix.   | The project proponent shall also comply with all the environmental protection measures and safeguards recommended in the EIA/EMP report. Further the company must undertake socio-economic development activities in the surrounding villages like community development programme, educational programmes, drinking water supply and health care etc. | <p>SLRM has implemented all the recommendations made in EIA report on environmental protection measures like installation of pollution control equipments, greenbelt development, monitoring of environmental quality etc.,</p> <p>SLRM has spent more than Rs. 1.27 Crores for Socio-economic CSR activities compliance period of 6 months. Socio-economic developments like providing note books, Bags, computers to school children, street lighting, RO drinking water in schools, Bus facility for students, Supporting poor students for their education through scholarship, appointment of teachers for govt. schools to fill the vacant position, Developed of Tailoring institutes to make women empowerment, conducting regular health check-up programs etc.,</p> <p>Attached is the report of CSR activities carried out during the compliance period of six months, presented as <b>Annexure-7</b>, which includes a summary of</p> |

|       |                                                                                                                                                                                                                                                                                                                                                                                                                                                                                                |                                                                                                                                                                                                                                                                                                                                                                                                                                                                                                                                      |
|-------|------------------------------------------------------------------------------------------------------------------------------------------------------------------------------------------------------------------------------------------------------------------------------------------------------------------------------------------------------------------------------------------------------------------------------------------------------------------------------------------------|--------------------------------------------------------------------------------------------------------------------------------------------------------------------------------------------------------------------------------------------------------------------------------------------------------------------------------------------------------------------------------------------------------------------------------------------------------------------------------------------------------------------------------------|
|       |                                                                                                                                                                                                                                                                                                                                                                                                                                                                                                | expenditures and photographs of the activities.                                                                                                                                                                                                                                                                                                                                                                                                                                                                                      |
| x.    | At least 5% of the total cost of the project should be earmarked towards the corporate social responsibility and item-wise details along with time bound action plan should be prepared and submitted to the Ministry of Regional Office at Bangalore. Implementation of such program should be ensured accordingly in a time bound manner.                                                                                                                                                    | <p>Already complied.</p> <p>Now the plant is in operations, SLRM is spending 2% of its profit in CSR and the detailed CSR report enclosed as <b>Annexure-7</b>.</p>                                                                                                                                                                                                                                                                                                                                                                  |
| xi.   | Requisite amount shall be earmarked towards capital cost and recurring cost/annum for environmental pollution control measures to implement the conditions stipulated by the Ministry of Environment and Forests as well as the State Government. An implementation schedule for implementing all the conditions stipulated herein shall be submitted to the Regional Office of the Ministry at Bangalore. The funds so provided shall not be diverted for any other purposes.                 | <p>Already complied.</p> <p>SLRM has incurred a capital investment of Rs. 18.00 crores on the following pollution control measures like, providing dust catcher &amp; gas cleaning plant (GCP) at EOF, Fume extraction System (FES) at LRF and Stack emission monitoring System etc.,</p> <p>SLRM is also spending Rs. 3 crores on operation &amp; Maintenance of these pollution control equipment for electricity, change of bags, chimney emission monitoring etc.,</p> <p>Funds earmarked for Environment was already spent.</p> |
| xii.  | A copy of clearance letter shall be sent by the proponent to concerned Panchayat, Zilla Parishid/Municipal Corporation, Urban Local Body and the local NGO, if any, from whom suggestions/representations, if any were received while processing the proposal. The clearance letter shall also be put on the website of the company by the proponent.                                                                                                                                          | Already complied.                                                                                                                                                                                                                                                                                                                                                                                                                                                                                                                    |
| xiii. | The project proponent shall upload the status of compliance of the stipulated environment clearance conditions, including results of monitored data on their website and shall update the same periodically. It shall simultaneously be sent to the regional Office of the MOEF at Bangalore. The respective Zonal Office of CPCB and SPCB. The criteria pollutant levels namely; PM <sub>10</sub> , SO <sub>2</sub> , NO <sub>x</sub> (ambient levels as well as stack emissions) or critical | <p>EC compliance report is up loaded in SLRM website <a href="https://slrm.co.in/responsible-business.html">https://slrm.co.in/responsible-business.html</a></p> <p>The copy of the environmental monitoring is submitted to KSPCB every month. Six monthly summary report is also submitted to regional office MoEFCC, Bangalore, every once in six months.</p> <p>The environmental monitoring results are displayed at main gate on Environment display board.</p>                                                                |

|       |                                                                                                                                                                                                                                                                                                                                                                                                                                                                                                                                                                                                                                                          |                                                                                                                                                                                                                                                   |
|-------|----------------------------------------------------------------------------------------------------------------------------------------------------------------------------------------------------------------------------------------------------------------------------------------------------------------------------------------------------------------------------------------------------------------------------------------------------------------------------------------------------------------------------------------------------------------------------------------------------------------------------------------------------------|---------------------------------------------------------------------------------------------------------------------------------------------------------------------------------------------------------------------------------------------------|
|       | sectoral parameters, indicated for the project shall be monitored and displayed at a convenient location near the main gate of the company in the public domain.                                                                                                                                                                                                                                                                                                                                                                                                                                                                                         |                                                                                                                                                                                                                                                   |
| xiv.  | The project shall also submit six monthly reports on the status of the compliance of the stipulated environmental conditions including results of the monitored data (both in hard copies as well as by e-mail) to the Regional Office of MOEF, the respective Zonal Office of CPCB and the SPCB. The Regional Office of this Ministry at Bangalore/CPCB/SPCB shall monitor the stipulated conditions.                                                                                                                                                                                                                                                   | Six monthly report having point wise EC compliance are being submitted to Regional MoEFCC over email, also uploaded on the parivesh 2.0 portal.                                                                                                   |
| xv.   | The environmental statement for each financial year ending 31 <sup>st</sup> March in Form-V as is mandated to be submitted by the project proponent to the concerned State Pollution Control Board as prescribed under the Environment (Protection) Rules, 1986, as amended subsequently, shall also be put on the website of the company along with the status of compliance of environmental conditions and shall also be sent to the respective Regional Office of the MOEF at Bangalore by e-mail.                                                                                                                                                   | Environment statement in Form-V is being submitted to KSPCB and Regional office, MOEFCC regular basis. Also upload on the SLRM website at <a href="https://slrm.co.in/responsible-business.html">https://slrm.co.in/responsible-business.html</a> |
| xvi.  | The Project Proponent shall inform the public that the project has been accorded environmental clearance by the Ministry and copies of the clearance letter are available with SPCB and may also be seen at Website of the Ministry of Environment and Forests at <a href="http://envfor.nic.in">http://envfor.nic.in</a> This shall be advertised within seven days from the date of issue of the clearance letter, atleast in two local newspapers that are widely circulated in the region of which one shall be in the vernacular language of the locality concerned and a copy of the same should be forwarded to the Regional Office at Bangalore. | Already Complied                                                                                                                                                                                                                                  |
| xvii. | Project authorities shall inform the                                                                                                                                                                                                                                                                                                                                                                                                                                                                                                                                                                                                                     | Already Complied                                                                                                                                                                                                                                  |

|     |                                                                                                                                                                                                                                                                                                                                                                 |                                                   |
|-----|-----------------------------------------------------------------------------------------------------------------------------------------------------------------------------------------------------------------------------------------------------------------------------------------------------------------------------------------------------------------|---------------------------------------------------|
|     | Regional Office as well as the Ministry, the date of financial closure and final approval of the project by the concerned authorities and the date of commencing the land development work.                                                                                                                                                                     |                                                   |
| 10. | The Ministry may revoke or suspend the clearance, if implementation of any of the above conditions is not satisfactory.                                                                                                                                                                                                                                         | Noted.                                            |
| 11. | The Ministry reserves the right to stipulate additional conditions if found necessary. The company in a time bound manner shall implement these conditions.                                                                                                                                                                                                     | Agreed                                            |
| 12. | Any appeal against this environmental clearance shall lie with the National Environmental Appellate Authority, if preferred within a period of 30 days as prescribed under Section 11 of the National Environmental Appellate Act, 1997.                                                                                                                        | Agreed                                            |
| 13. | The above conditions shall be enforced, inter-alia under the provisions of the Water (Act, 1974, The Air (Prevention & Control of Pollution) Act, 1981, Environment (Protection) Act, 1986, Hazardous Waste (Management, Handling and Transboundary Movement) Rules, 2008 and the Public (Insurance) Liability Act, 1991 along with their amendments and rules. | Noted, Will adhere as per statutory requirements. |

\*\*\*\*\*End of report\*\*\*\*\*

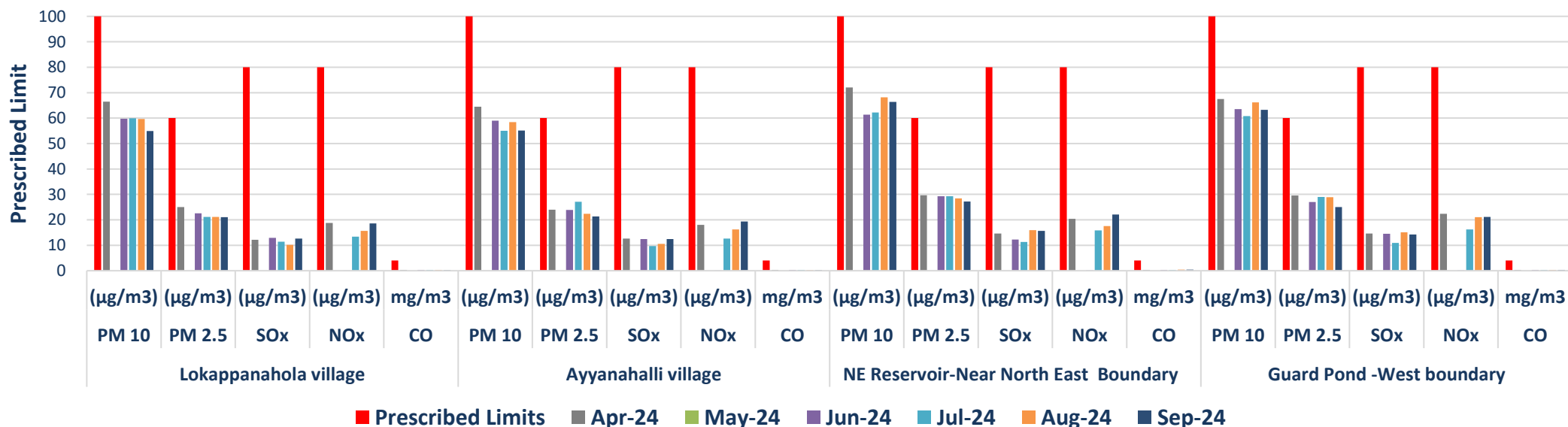
**Cummilative ambient air quality monitoring report for the month of April-2024 to Sept-2024**

| Location          | Lokappanahola village |         |         |         |       | Ayyanahalli village |         |         |         |       | NE Reservoir-Near North East Boundary |         |         |         |       | Guard Pond -West boundary |         |         |         |       |
|-------------------|-----------------------|---------|---------|---------|-------|---------------------|---------|---------|---------|-------|---------------------------------------|---------|---------|---------|-------|---------------------------|---------|---------|---------|-------|
| Parameters        | PM 10                 | PM 2.5  | SOx     | NOx     | CO    | PM 10               | PM 2.5  | SOx     | NOx     | CO    | PM 10                                 | PM 2.5  | SOx     | NOx     | CO    | PM 10                     | PM 2.5  | SOx     | NOx     | CO    |
| Unit              | (µg/m3)               | (µg/m3) | (µg/m3) | (µg/m3) | mg/m3 | (µg/m3)             | (µg/m3) | (µg/m3) | (µg/m3) | mg/m3 | (µg/m3)                               | (µg/m3) | (µg/m3) | (µg/m3) | mg/m3 | (µg/m3)                   | (µg/m3) | (µg/m3) | (µg/m3) | mg/m3 |
| Prescribed Limits | 100                   | 60      | 80      | 80      | 4     | 100                 | 60      | 80      | 80      | 4     | 100                                   | 60      | 80      | 80      | 4     | 100                       | 60      | 80      | 80      | 4     |
| Apr-24            | 66.41                 | 25.05   | 12.13   | 18.81   | 0.32  | 64.48               | 24.01   | 12.68   | 18.05   | 0.30  | 72.05                                 | 29.66   | 14.59   | 20.40   | 0.37  | 67.53                     | 29.60   | 14.65   | 22.41   | 0.36  |
| May-24            | NA                    | NA      | NA      | NA      | NA    | NA                  | NA      | NA      | NA      | NA    | NA                                    | NA      | NA      | NA      | NA    | NA                        | NA      | NA      | NA      | NA    |
| Jun-24            | 59.73                 | 22.54   | 12.96   | 0.07    | 0.32  | 59.025              | 23.89   | 12.40   | 0.07    | 0.31  | 61.35                                 | 29.26   | 12.29   | 0.13    | 0.32  | 63.49                     | 27.05   | 14.51   | 0.14    | 0.33  |
| Jul-24            | 59.89                 | 21.10   | 11.43   | 13.39   | 0.38  | 54.99               | 27.09   | 9.69    | 12.66   | 0.32  | 62.16                                 | 29.25   | 11.30   | 15.86   | 0.35  | 60.81                     | 29.00   | 10.95   | 16.19   | 0.33  |
| Aug-24            | 59.66                 | 21.16   | 10.21   | 15.70   | 0.30  | 58.46               | 22.35   | 10.58   | 16.28   | 0.26  | 68.18                                 | 28.39   | 15.91   | 17.59   | 0.44  | 66.16                     | 28.91   | 15.05   | 21.05   | 0.36  |
| Sep-24            | 54.89                 | 21.08   | 12.61   | 18.60   | 0.28  | 55.13               | 21.30   | 12.47   | 19.35   | 0.27  | 66.39                                 | 27.16   | 15.64   | 22.14   | 0.41  | 63.24                     | 25.04   | 14.29   | 21.16   | 0.34  |

NA-Not Applicable.

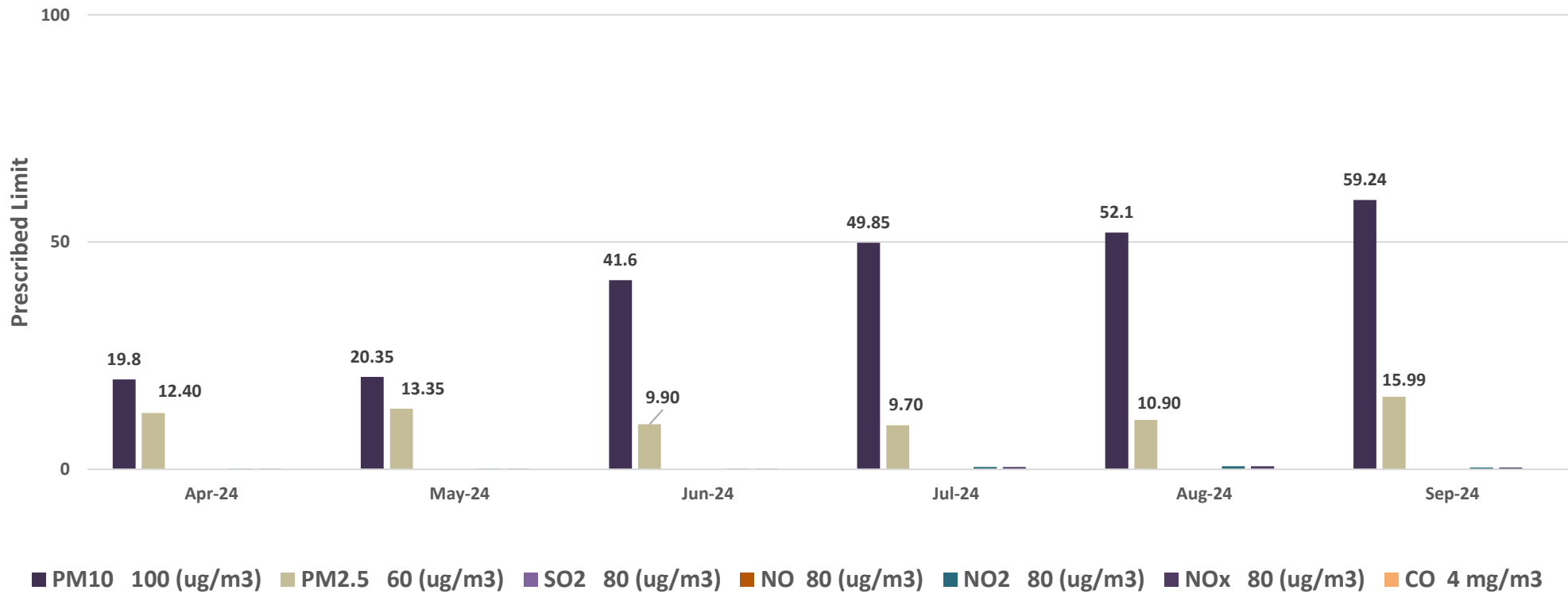
**Note:** Environmental monitoring was not conducted in May-2024 due to the plant shutdown.

**Cumulative ambient air quality monitoring report for the month of April-2024 to September-2024**





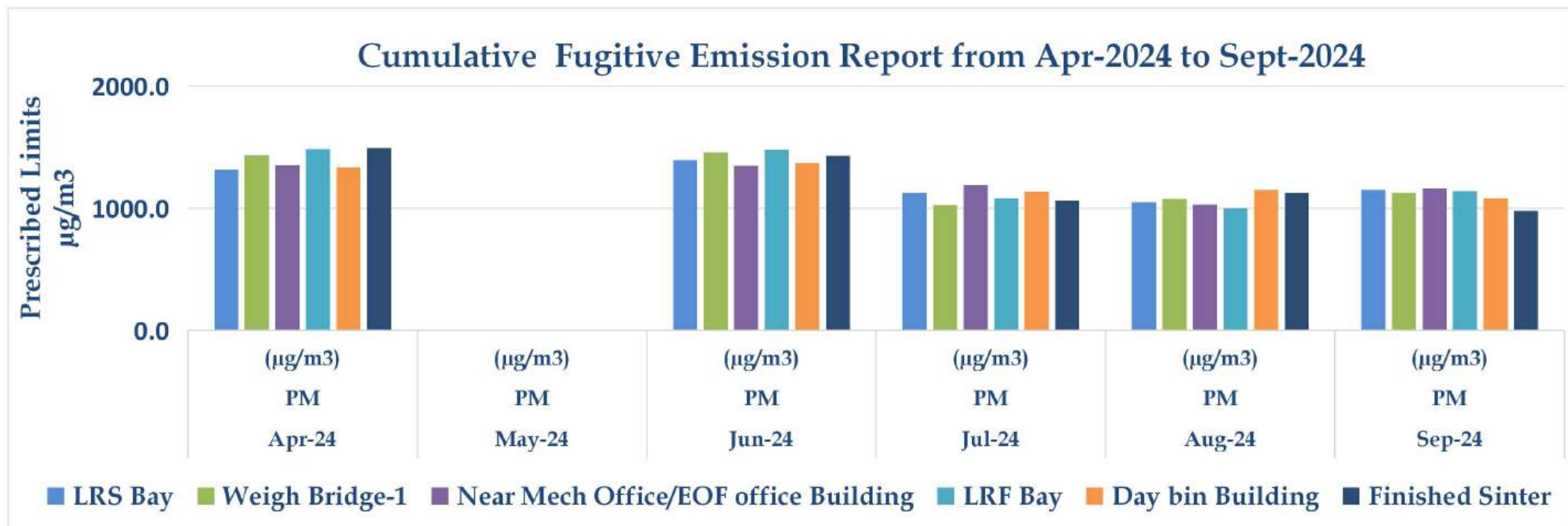
CAAQMS Report for the month of April-2024 to September-2024  
NE BOUNDARY CAAQMS STATION No-1



**Cumulative Fugitive Emission (SPM-1m from the source) Report for the Month of Apr-2024 to Sept-2024**

| Name of the Location                 | Apr-24               | May-24               | Jun-24               | Jul-24               | Aug-24               | Sep-24               |
|--------------------------------------|----------------------|----------------------|----------------------|----------------------|----------------------|----------------------|
| Parameters                           | PM                   | PM                   | PM                   | PM                   | PM                   | PM                   |
| Unit                                 | (µg/m <sup>3</sup> ) | (µg/m <sup>3</sup> ) | (µg/m <sup>3</sup> ) | (µg/m <sup>3</sup> ) | (µg/m <sup>3</sup> ) | (µg/m <sup>3</sup> ) |
| Prescribed Limits                    | 2000                 | 2000                 | 2000                 | 2000                 | 2000                 | 2000                 |
| LRS Bay                              | 1314.4               | NA                   | 1396.1               | 1126.6               | 1050.7               | 1150.4               |
| Weigh Bridge-1                       | 1432.2               | NA                   | 1456.7               | 1025.7               | 1076.4               | 1125.9               |
| Near Mech Office/EOF office Building | 1352.6               | NA                   | 1347.1               | 1188.6               | 1028.7               | 1162.4               |
| LRF Bay                              | 1484.1               | NA                   | 1479.5               | 1082.4               | 996.9                | 1138.8               |
| Day bin Building                     | 1333.8               | NA                   | 1369.7               | 1133.7               | 1152.4               | 1080.1               |
| Finished Sinter                      | 1492.8               | NA                   | 1429.4               | 1065.4               | 1126.6               | 980.6                |

NA-During May-2024 the Environmental monitoring is not conducted due to Plant is shutdown.



Green Belt Development Photos

The Plantation Planted in Boundary of the plant area of inside and outside of the plant during the period from April-2024 to September-2024.





ಎಸ್ ಎಲ್ ಆರ್ ಮೆಟಾಲ್ಸ್ ಲಿಮಿಟೆಡ್  
**SLR Metaliks Limited**  
 Safe Steel, Green Steel, Clean Steel



**ವಿಶ್ವ  
 ಪರಿಸರ ದಿನ**



**WORLD  
 ENVIRONMENT  
 DAY**

**5<sup>th</sup> June 2024**

**"ನಮ್ಮ ಭೂಮಿ, ನಮ್ಮ ಭವಿಷ್ಯ ನಾವುಗಳು #ಪೀಳಿಗೆಯ ಪುನಃಸ್ಥಾಪನೆ ಮಾಡುವವರು"**  
**" Our land, Our future, We are # Generation Restoration"**















ಕರ್ನಾಟಕ ರಾಜ್ಯ ಮಾಲಿನ್ಯ ನಿಯಂತ್ರಣ ಮಂಡಳಿ  
ಪ್ರಾದೇಶಿಕ ಕಛೇರಿ, ವಿಜಯನಗರ



SLR<sup>®</sup>  
Metalks  
Powered by Passion



GTTC  
GATEWAY TO TALENT

**ಜಿ.ಟಿ.ಟಿ.ಸಿ ಕಾಲೇಜು,**  
ಮರಿಯಮ್ಮನಹಳ್ಳಿ

**ಇವರ ಸಂಯುಕ್ತಾಶ್ರಯದಲ್ಲ :**

## ಎಸ್.ಎಲ್.ಆರ್. ಮೆಟಾಲ್ಸ್ ಅಮಿಟೆಡ್ ವತಿಯಿಂದ

# “ವನ ಮಹೋತ್ಸವ ಮತ್ತು ವಿಶ್ವ ಪರಿಸರ ದಿನಾಚರಣೆ-2024”

## “Plantation Program & World Environment Day-2024”

ದಿನಾಂಕ : 05-07-2024 ಬೆಳಿಗ್ಗೆ 11-00 ಘಂಟೆಗೆ      ಸ್ಥಳ : ಜಿ.ಟಿ.ಟಿ.ಸಿ ಕಾಲೇಜು ಸಭಾಂಗಣ, ಮರಿಯಮ್ಮನಹಳ್ಳಿ, ಹೊಸಪೇಟೆ ತಾ|| ವಿಜಯನಗರ ಜಿ||

**“Our Land. Our Future We are # Generation Restoration”**  
“ನಮ್ಮ ಭೂಮಿ, ನಮ್ಮ ಭವಿಷ್ಯ, ನಾವುಗಳು, #ಪೀಳಿಗೆಯ ಪುನಃಸ್ಥಾಪನೆ ಮಾಡುವವರು”



ಕರ್ನಾಟಕ ರಾಜ್ಯ ಮಾಲಿನ್ಯ ನಿಯಂತ್ರಣ ಮಂಡಳಿ  
ಪ್ರಾದೇಶಿಕ ಕಛೇರಿ, ವಿಜಯನಗರ



SLR<sup>®</sup>  
Metalks  
Powered by Passion

**ಜಿ.ಟಿ.ಟಿ.ಸಿ. ಕಾಲೇಜು,** ಮರಿಯಮ್ಮನಹಳ್ಳಿ  
ಇವರ ಸಂಯುಕ್ತಾಶ್ರಯದಲ್ಲಿ  
ಎಸ್.ಎಲ್.ಆರ್. ಮೆಟಾಲ್ಸ್ ಅಮಿಟೆಡ್ ವತಿಯಿಂದ



GTTC  
GATEWAY TO TALENT

### “ವನ ಮಹೋತ್ಸವ ಮತ್ತು ವಿಶ್ವ ಪರಿಸರ ದಿನಾಚರಣೆ-2024”

“Our land. Our future. We are #Generation Restoration”

ದಿನಾಂಕ : 05-07-2024, ಬೆಳಿಗ್ಗೆ 11.00 ಘಂಟೆಗೆ  
ಸ್ಥಳ: ಜಿ.ಟಿ.ಟಿ.ಸಿ ಕಾಲೇಜು ಸಭಾಂಗಣ,  
ಮರಿಯಮ್ಮನಹಳ್ಳಿ, ಹೊಸಪೇಟೆ ತಾ|| ವಿಜಯನಗರ ಜಿ||

“ನಮ್ಮ ಭೂಮಿ, ನಮ್ಮ ಭವಿಷ್ಯ, ನಾವುಗಳು, #ಪೀಳಿಗೆಯ ಪುನಃಸ್ಥಾಪನೆ ಮಾಡುವವರು”

**ಮುಖ್ಯ ಅತಿಥಿಗಳು:**  
**ಶ್ರೀ ದೇವ ದ್ಯುತಿ ಸೇನ್**  
ವಿವೇಕಾಚಾರ್ಯ, ಎಸ್.ಎಲ್.ಆರ್. ಮೆಟಾಲ್ಸ್ ಲಿ. ಅಧ್ಯಕ್ಷಿ ವಾಹಣಿ  
**ಡಾ. ಅಬ್ದುಲ್ ಸಮದ್ (ಕೊಟ್ಟಾಯ)**  
ಪರಿಸರ & ವನ್ಯಜೀವಿ ತಜ್ಞರು, ಹೊಸಪೇಟೆ ಲಾಹೃತಿ  
**ಶ್ರೀ ಎಂ. ಪಾಪಾ**  
ಮುಖ್ಯ ಅಧಿಕಾರಿಗಳು, ಪಟ್ಟಣ ಸಂಚಾಯಿತಿ, ಮರಿಯಮ್ಮನಹಳ್ಳಿ

**ವಿಶೇಷ ಅಪ್ಪಣಿತರು:**  
**ಶ್ರೀ ಮುರಳೀಧರ ಬಿ.ಎಸ್.**  
ಹಿರಿಯ ಪುನರ ಅಧಿಕಾರಿಗಳು, ವಿಜಯನಗರ  
**ಶ್ರೀ ದೊಡ್ಡಪಾಯ್ಕ**  
ಪುನರ ಅಧಿಕಾರಿಗಳು (ಜಿ.ಪಿ.), ವಿಜಯನಗರ  
**ಶ್ರೀ ರವಿಕುಮಾರ್ ಯಾದವ್**  
ಸದಸ್ಯರು, ರಾಜ್ಯಮಟ್ಟದ ಪರಿಗಣಿತ ವೃತ್ತ ಅಂದಾಜೀಕರಣ ಸಮಿತಿ

**ಶ್ರೀ ಅಂಬಲಕುಮಾರ್ ಡಿ.**  
ಪಾಂಪುಪಾಲರು, ಜಿ.ಟಿ.ಟಿ.ಸಿ. ಕಾಲೇಜು

**ಶ್ರೀ ಮಲ್ಲಿಕಾರ್ಜುನಯ್ಯ**  
ಪಾಂಪುಪಾಲರು, ಜಿ.ಎನ್.ಜಿ. ಕಾಲೇಜು

ಮರಿಯಮ್ಮನಹಳ್ಳಿಯ ಕಾರ್ಯನಿರತ ಪತ್ರಕರ್ತರು, ಕಾಲೇಜಿನ ಉಪನ್ಯಾಸಕರು, ಆಡಳಿತ ವರ್ಗ, ವಿದ್ಯಾರ್ಥಿ, ವಿದ್ಯಾರ್ಥಿನಿಯರು ಮತ್ತು ಎಸ್.ಎಲ್.ಆರ್. ಮೆಟಾಲ್ಸ್ ಸಿಬ್ಬಂದಿ ವರ್ಗ











Developing plantations in an inhouse nursery.





+

### Cumulative Ambient Day & Night Noise Monitoring Report

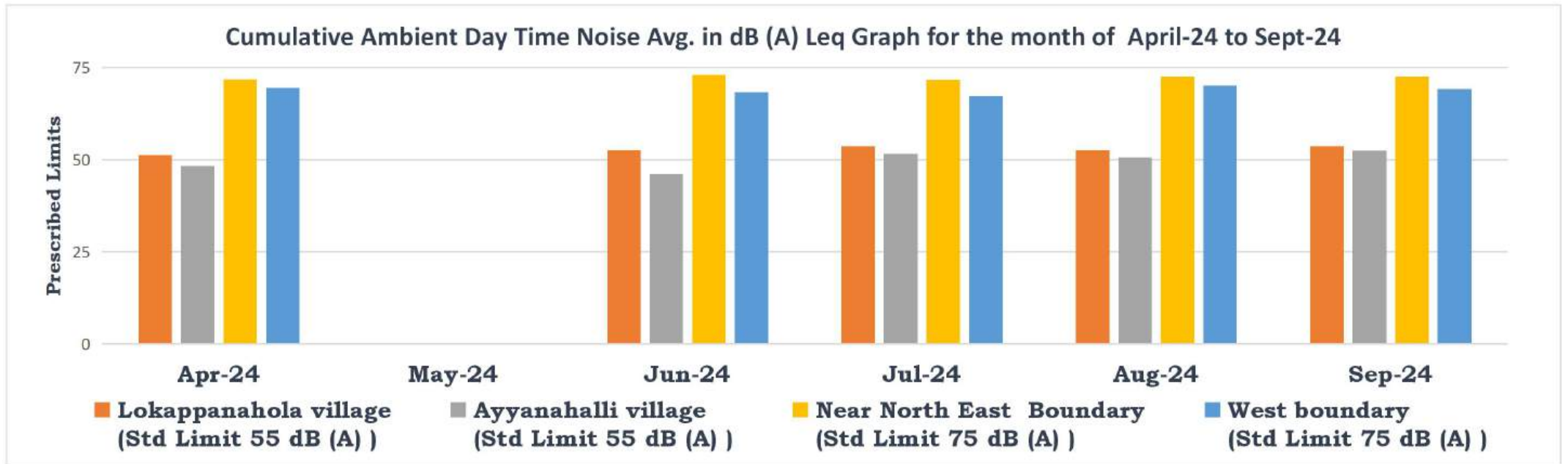
#### Cumulative Ambient Day Time Noise Avg. in dB (A) Leq from April-2024 to September-2024

| Location         | Lokappanahola village<br>(Std Limit 55 dB (A) ) | Ayyanahalli village<br>(Std Limit 55 dB (A) ) | Near North East Boundary<br>(Std Limit 75 dB (A) ) | West boundary<br>(Std Limit 75 dB (A) ) |
|------------------|-------------------------------------------------|-----------------------------------------------|----------------------------------------------------|-----------------------------------------|
| Prescribed Limit | 55.0                                            | 55.0                                          | 75.0                                               | 75.0                                    |
| Apr-24           | 51.30                                           | 48.30                                         | 71.80                                              | 69.50                                   |
| May-24           | NA                                              | NA                                            | NA                                                 | NA                                      |
| Jun-24           | 52.70                                           | 46.20                                         | 73.10                                              | 68.30                                   |
| Jul-24           | 53.70                                           | 51.60                                         | 71.70                                              | 67.40                                   |
| Aug-24           | 52.70                                           | 50.60                                         | 72.60                                              | 70.20                                   |
| Sep-24           | 53.70                                           | 52.60                                         | 72.60                                              | 69.20                                   |

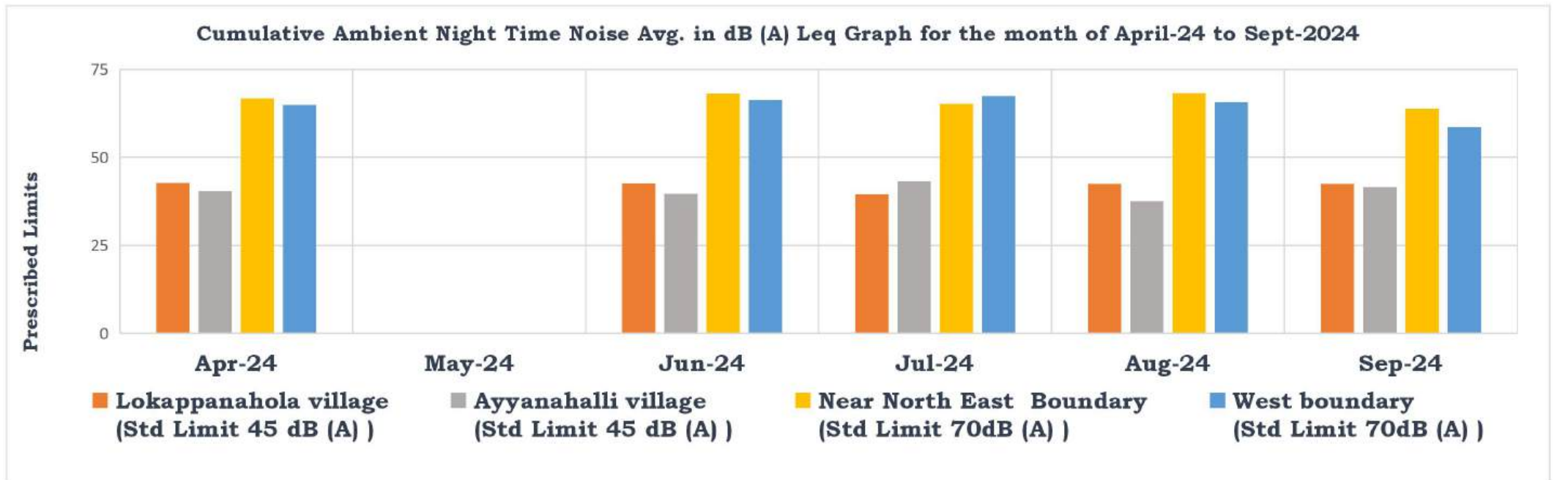
#### Cumulative Ambient Night Time Noise Avg. in dB (A) Leq from April-2024 to September-2024

| Location         | Lokappanahola village<br>(Std Limit 45 dB (A) ) | Ayyanahalli village<br>(Std Limit 45 dB (A) ) | Near North East Boundary<br>(Std Limit 70dB (A) ) | West boundary<br>(Std Limit 70dB (A) ) |
|------------------|-------------------------------------------------|-----------------------------------------------|---------------------------------------------------|----------------------------------------|
| Prescribed Limit | 45.0                                            | 45.0                                          | 70.0                                              | 70.0                                   |
| Apr-24           | 42.70                                           | 40.30                                         | 66.70                                             | 64.90                                  |
| May-24           | NA                                              | NA                                            | NA                                                | NA                                     |
| Jun-24           | 42.60                                           | 39.70                                         | 68.10                                             | 66.20                                  |
| Jul-24           | 39.60                                           | 43.20                                         | 65.10                                             | 67.40                                  |
| Aug-24           | 42.50                                           | 37.60                                         | 68.20                                             | 65.70                                  |
| Sep-24           | 42.5                                            | 41.5                                          | 63.8                                              | 58.6                                   |

NA-During May-2024 the Environmental monitoring is not conducted due to Plant is shutdown.



NA-During May-2024 the Environmental monitoring is not conducted due to Plant is shutdown.



## STORM WATER MANAGEMENT PLAN:

### 1.1 Need for Storm Water Management:

SLR Metaliks limited is located on a distance of 0.16km above the HFL of the TB Dam at Sy. 632 & others, ND Kere Village, HB Halli Taluk, Vijayanagar District. In absence of fool proof storm water management plan, the plant wash off may join the TB dam back waters resulting in contamination of River water, in the event of heavy down pour.

Therefore, a comprehensive and exclusive storm water drainage systems having robust & fool proof storm water management has been designed to handle the storm water to a maximum rain fall to effectively manage and reuse the storm water. It will serves as rain water harvesting to utilize in the process to reduce the fresh water consumption as well as to prevent any event of contamination of TB river water from the plant wash off.

### 1.2 Topography of the land:

SLR Metaliks Limited (SLRM) possess 234 acres of land having rocky waste land and mostly flat terrain having small mounds of rocky outcrops observed central and South Eastern parts of the land.

Highest elevation is located on the center of the plant with an height of 517.7m MSL making storm water drains on both East and west direction. Lowest elevation on the East measures 511.2m MSL on the NE corner and the West measures 505.7m MSL on west boundary.

Elevation difference from the highest elevation (center) to lowest elevation (west) is 15m with a slope gradient of 1 : 45m. Elevation difference from the highest elevation (center) to lowest elevation (East) is 9.5m with a slope gradient of 1 : 55m.



Fig1: Google earth map showing plant boundary and the topography with elevation of Bench marks.

### 1.3 Drainage pattern:

Since, the area is very small, flat and rocky, there are no natural nallahs developed within the premises. Only micro water flow foot print can be seen on the land having radiating micro drains. After establishment of the plant buildings, roads and drainages, water flows are regulated and channelized to the lowest elevations to drain the storm water.

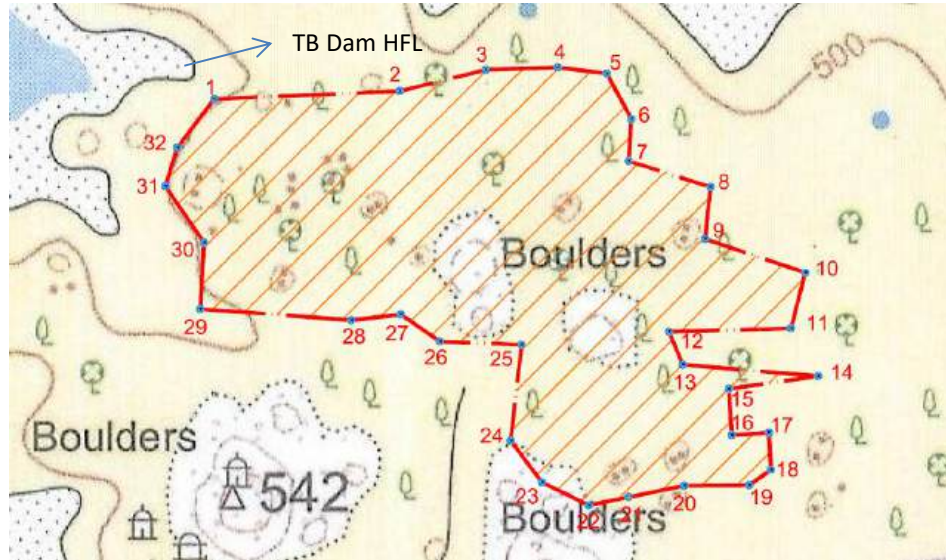


Fig. 2: Topo sheet map showing Flat terrain with small mounds at center and no drains/nalla's and TB Dam HFL on west boundary



Fig. 3: Google earth map showing radial mirco drainage pattern guard ponds and storm water flow zones

#### 1.4 Land use Breakup: (area in ha)

| S. No | Description                | Before Expansion | After Expansion |
|-------|----------------------------|------------------|-----------------|
| 1     | Built up area              | 11.74            | 23.89           |
| 2     | Raw Material storage yards | 10.12            | 11.74           |
| 3     | Roads                      | 4.86             | 5.67            |
| 4     | Water storage reservoirs   | 7.29             | 10.93           |
| 5     | Afforestation              | 33.20            | 33.20           |
| 6     | Parking area               | 3.24             | 3.24            |
| 7     | Vacant Land                | 24.28            | 6.06            |
|       | <b>Total land</b>          | <b>94.73</b>     | <b>94.73</b>    |

#### 1.5 Rainfall Pattern:

As per the historical rain fall data of 25 years and Automatic weather station installed within the premises, the rain fall in this area is classified as moderate (15.6 – 64.4 mm/day). The average annual rainfall is 639 mm of which 10% is considered. The maximum storm intensity for the duration of 90 min. rainfall is 40 to 50mm/hr is considered.

#### 1.6 Runoff Estimation:

The basic requirement for designing of Storm Water Drainage system is the proper estimation of storm runoff to downstream drains or to the point of disposal. It has bearing on optimizing cost of infrastructure as well as its performance. The parameters like rainfall intensity, imperviousness factor, coefficient of runoff, recurrence period, climate change and identification / zoning of drainage catchment play an important role.

#### 1.7 Storm Runoff:

The land area at SLRM is divided into 4 zones based on the topography and storm water runoff.

Zone -1 : Western part of the plant having 2,10,000 m<sup>2</sup> area draining the storm water towards west side.

Zone -2 : Northern part of the plant having 89,000 m<sup>2</sup> area draining the storm water towards north east

Zone -3 : Central part of the plant having 1,53,000 m<sup>2</sup> area draining the storm water towards north east

Zone -4 : South eastern part of the plant having 2,15,000 m<sup>2</sup> area draining the storm water towards East boundary

Zone details can be evident form the map given below.



Fig.3: Google earth Map showing different zones of topography draining storm water and guard ponds 1 & 2.

**Total project area : 946965 sq.m**

1. Zone-1 Catchment area towards west Guard Pond : 2,10,000 sq.m (21 ha)  
(Paved: 97,000 sq.m+ unpaved: 1,13,000sq.m)
2. Zone-2 Catchment area towards North east Guard Pond: 89,000 sq.m (8.9 ha)  
(Paved: 39,000 sq.m+ unpaved: 50,000 sq.m)
3. Zone-3 Catchment area towards North east Guard Pond: 1,53,000 sq.m (15.3 ha)  
(Paved: 53,000 sq.m+ unpaved: 1,00,000 sq.m)
4. Zone-4 Catchment area towards south east (virgin area): 4,94,965 sq.m (49.49 ha)  
(Paved: 10,000 sq.m+ unpaved: 4,84,965 sq.m)

### 1.8 Following data used for run off estimation:

|                                                                                   |   |                                                |
|-----------------------------------------------------------------------------------|---|------------------------------------------------|
| Method used to estimate runoff                                                    | : | Rational Method                                |
| Historical rainfall data                                                          | : | 25 years                                       |
| Catchment by demarcating                                                          | : | Toposheet map, survey map                      |
| Rainfall intensity (Max)                                                          | : | 100 mm /day                                    |
| Runoff coefficient (C)                                                            | : | Industrial area Paved & Un paved together: 60% |
| Weighted average value of the 60% imperviousness runoff coefficient for 60 minute | : | 0.569*                                         |

(\*Source: Manual on Sewerage & Sewage Treatment Plants, CPHEEO, 2013)

### 1.9 Design Flow of Storm water on a peak rain fall:

$$Q_p = 10 CIA$$

Where,

Q<sub>p</sub>: Peak flow at the point of design m<sup>3</sup>/hr

C : Runoff coefficient, dimensionless

I : Average rainfall intensity should be taken for the duration of rainfall equal to the time of concentration, mm/hr

A : Catchment area, hectares

#### Flow of Storm water on a peak rain fall considering 100mm rain fall in 24 hrs:

| A      | B                                                                        | C                                   | D                                          | F             |
|--------|--------------------------------------------------------------------------|-------------------------------------|--------------------------------------------|---------------|
| Zones  | Storm water Flow calculation (on a highest rain day)                     | Storm water Volume m <sup>3</sup> # | Volume of Guard pond ( in m <sup>3</sup> ) | Ratio (F=D/C) |
| Zone-1 | Q <sub>p</sub> = 10 X 0.569 X 100 X 21                                   | 11,949                              | 90000                                      | 1: 7.5 times  |
| Zone-2 | Q <sub>p</sub> = 10 X 0.569 X 100 X 8.9                                  | 5,064                               | 1,20,000                                   | 1: 8.71 times |
| Zone-3 | Q <sub>p</sub> = 10 X 0.569 X 100 X 15.3                                 | 8,705                               |                                            |               |
| Zone-4 | Q <sub>p</sub> = 10 X 0.33 X 100 X 49.9<br>(Afforestation & virgin land) | 16,467                              | NA                                         | NA            |

# All tertiary, secondary and primary Storm water drains are designed taking into account the peak flow.

From the above table it can be evident that, even at the 100mm rain fall within 24 hr duration, the guard pond-1 can accommodate 1 : 7.5 times of the storm water and the guard pond-2 can accommodate 8.71 times of the storm water.

The collected storm water is being pumped back and utilized in the process; hence, the storage in the guard pond will be kept as low as possible.

### 1.10 Storm water run off for the entire year (Annual rain fall):

**a. Zone-1:** Guard pond-1 capacity **90,000 m<sup>3</sup>**

Rainfall of the area : 639 mm (0.63 m)

Runoff coefficient (avg) : 0.569

**Total Runoff from Zone-1** :  $2,10,000 \times 0.569 \times 0.63$   
= 75,278m<sup>3</sup> per year

From the above calculation it is evident that, guard pond can accommodate all the storm water of the entire year

**b. Zone-2 & 3 :** Guard pond-2 capacity **120,000 m<sup>3</sup>**

Rainfall of the area : 639 mm (0.63 m)

Runoff coefficient (avg) : 0.569

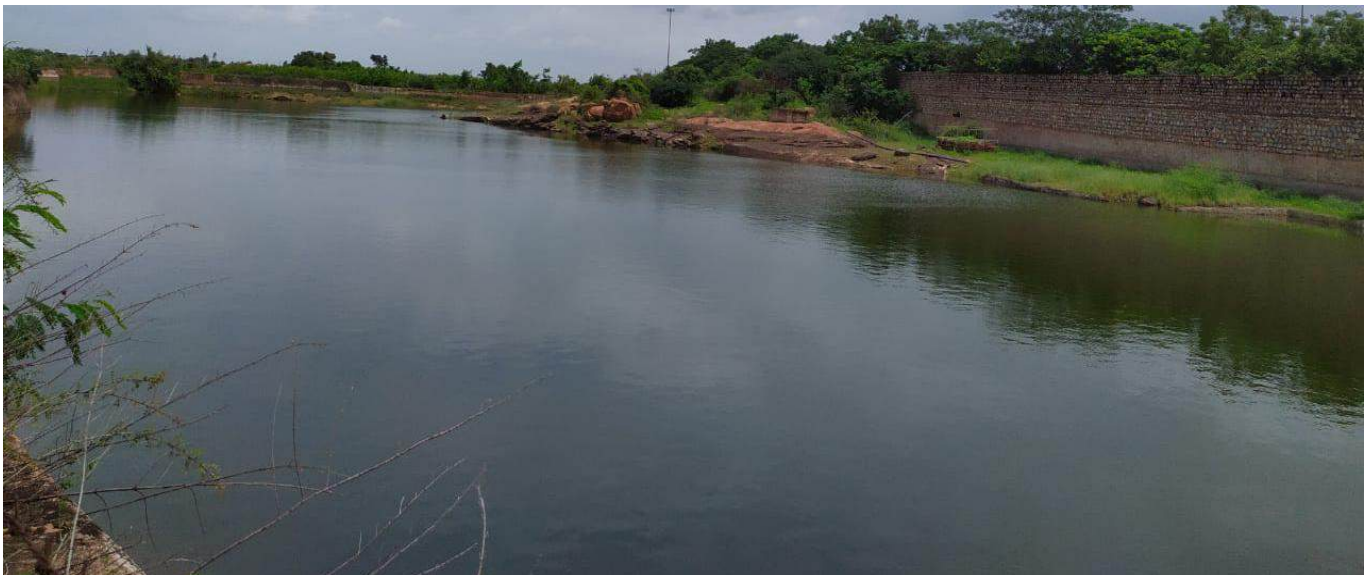
**Total Runoff from Zone-2&3** :  $2,42,000 \times 0.569 \times 0.63$   
= 86,750 m<sup>3</sup> per year

From the above calculation it is evident that, guard pond can accommodate all the storm water of the entire year

### 1.11 Conclusion:

The above calculations of storm water flow in a peak rain fall & on an annual rain fall, it is justified that, the existing Guard pond 1 &2 capacities are adequate to accommodate both peak and annual average storm water flow. At no point of time, storm water will be allowed to overflow from the guard ponds. Hence, it is ensured that, there will be no contamination of TB River water from the plant wash off at all the time.

**Guard pond-1 provided at lowest elevation to collect storm water**



**Settling pond provided at end of storm water drains before guard pond**



**Guard pond-2 provided at lowest elevation to collect storm water**



**CORPORATE SOCIAL  
RESPONSIBILITY  
BY  
M/S. SLR METALIKS LTD.**

**PERIOD FROM  
APRIL-2024 TO SEPTEMBER-2024**

### CSR expenditure details from April-2024 to September-2024

| Month                                                                      | Description                                                           | Under the Scheme of      | Place              | Amount       |
|----------------------------------------------------------------------------|-----------------------------------------------------------------------|--------------------------|--------------------|--------------|
| April-24                                                                   | Promoting Education : Kalika kendras Hindu Seva Prathistana           | Vidyarthi Mithra         | Lokappanahola      | 22,96,914.20 |
|                                                                            | Promoting Education : Kalika kendras Hindu Seva Prathistana           | Vidyarthi Mithra         | Narayanadevarakere |              |
|                                                                            | Promoting Education : Kalika kendras Hindu Seva Prathistana           | Vidyarthi Mithra         | Marabbihal         |              |
|                                                                            | Arogya mithra :Nutrition Food kit support to TB patients              | Arogya Mithra            | Mariyammahalli     |              |
|                                                                            | Arogya mithra :Nutrition Food kit support to TB patients              | Arogya Mithra            | Baachikondanahalli |              |
|                                                                            | Arogya mithra :Nutrition Food kit support to TB patients              | Arogya Mithra            | Maggimavanahalli   |              |
|                                                                            | Arogya mithra :Nutrition Food kit support to TB patients              | Arogya Mithra            | Hagaribommahalli   |              |
|                                                                            | Arogya mithra :Nutrition Food kit support to TB patients              | Arogya Mithra            | Hampasagara        |              |
|                                                                            | Honorarium to teacher in blind school (SLRM Saviour Charitable trust) | Vidyarthi Mithra         | Hospet             |              |
|                                                                            | Raitamitra Yojan : Land Development progrmme                          | Raitamitra               | Ayyanahalli        |              |
|                                                                            | Raitamitra Yojan : Land Development progrmme                          | Raitamitra               | Narayanadevarakere |              |
|                                                                            | Raitamitra Yojan : Land Development progrmme                          | Raitamitra               | Lokappanahola      |              |
|                                                                            | Basic Computer training (CGAET)                                       | Vidyarthi Mithra         | Ayyanahalli        |              |
|                                                                            | Mobile Health unit , Health Camp under Arogya Mitra Yojan             | Arogya Mithra            | Ayyanahalli        |              |
|                                                                            | Mobile Health unit , Health Camp under Arogya Mitra Yojan             | Arogya Mithra            | Narayanadevarakere |              |
|                                                                            | Mobile Health unit , Health Camp under Arogya Mitra Yojan             | Arogya Mithra            | Lokappanahola      |              |
|                                                                            | Skill Development Training ( Drivig Training Class)                   | Skill Development        | Lokappanahola      |              |
|                                                                            | Skill Development Training ( Drivig Training Class)                   | Skill Development        | Ayyanahalli        |              |
|                                                                            | Drinking Water Supply to Mariyammanahalli Town                        | Samajika Mithra          | Ayyanahalli        |              |
|                                                                            | Drinking Water Suppl Byalakundi village                               | Samajika Mithra          | Byalakundi         |              |
| Raitamitra Yojan : De-Silting of lift Irragation Canal Work Kenchetanahlli | Raitamitra                                                            | Kenchetanahalli          |                    |              |
| Drinking Water Kiosk @ 5 location of Mariyammanahalli Town                 | Samajika Mithra                                                       | Mariyammahalli           |                    |              |
| Skill Development Training ( Drivig Training Class)                        | Skill Development                                                     | Priyankanagara,M.M.Halli |                    |              |

|                                                            |                                                             |                  |                    |                     |
|------------------------------------------------------------|-------------------------------------------------------------|------------------|--------------------|---------------------|
| <b>May-24</b>                                              | Promoting Education : Kalika kendras Hindu Seva Prathistana | Vidyarthi Mithra | Lokappannahola     | <b>20,26,961.00</b> |
|                                                            | Promoting Education : Kalika kendras Hindu Seva Prathistana | Vidyarthi Mithra | Narayanadevarakere |                     |
|                                                            | Promoting Education : Kalika kendras Hindu Seva Prathistana | Vidyarthi Mithra | Marabbihal         |                     |
|                                                            | Arogya mithra :Nutrition Food kit support to TB patients    | Arogya Mithra    | Mariyammahalli     |                     |
|                                                            | Arogya mithra :Nutrition Food kit support to TB patients    | Arogya Mithra    | Baachikondanahalli |                     |
|                                                            | Arogya mithra :Nutrition Food kit support to TB patients    | Arogya Mithra    | Maggimavanahalli   |                     |
|                                                            | Arogya mithra :Nutrition Food kit support to TB patients    | Arogya Mithra    | Hagaribommahalli   |                     |
|                                                            | Arogya mithra :Nutrition Food kit support to TB patients    | Arogya Mithra    | Hampasagara        |                     |
|                                                            | Honorarium to teacher in blind school                       | Vidyarthi Mithra | Hospet             |                     |
|                                                            | Desiliting work Kenchetanahlli and Ayyanahalli              | Raitamitra       | Ayyanahalli        |                     |
|                                                            | Desiliting work Kenchetanahlli and Ayyanahalli              | Raitamitra       | Kechetanahalli     |                     |
|                                                            | Basic Computer training (CGAET)                             | Vidyarthi Mithra | Ayyanahalli        |                     |
|                                                            | Mobile Health unit , Health Camp under Arogya Mitra Yojan   | Arogya Mithra    | Ayyanahalli        |                     |
|                                                            | Mobile Health unit , Health Camp under Arogya Mitra Yojan   | Arogya Mithra    | Narayanadevarakere |                     |
|                                                            | Mobile Health unit , Health Camp under Arogya Mitra Yojan   | Arogya Mithra    | Lokappannahola     |                     |
|                                                            | Drinking Water Tank Supply Mariyammanahalli                 | Samajika Mithra  | Mariyammahalli     |                     |
| Drinking Water Kiosk @ 5 location of Mariyammanahalli Town | Samajika Mithra                                             | Mariyammahalli   |                    |                     |

|                                                   |                                                           |                          |                      |              |
|---------------------------------------------------|-----------------------------------------------------------|--------------------------|----------------------|--------------|
| Jun-24                                            | Arogya mithra :Nutrition Food kit support to TB patients  | Arogya Mithra            | Mariyammahalli       | 23,42,578.00 |
|                                                   | Arogya mithra :Nutrition Food kit support to TB patients  | Arogya Mithra            | Baachikondanahalli   |              |
|                                                   | Arogya mithra :Nutrition Food kit support to TB patients  | Arogya Mithra            | Maggimavanahalli     |              |
|                                                   | Arogya mithra :Nutrition Food kit support to TB patients  | Arogya Mithra            | Hagaribomnahalli     |              |
|                                                   | Arogya mithra :Nutrition Food kit support to TB patients  | Arogya Mithra            | Hampasagara          |              |
|                                                   | Honorarium to teacher in blind school                     | Vidyarthi Mithra         | Hospet               |              |
|                                                   | Basic Computer training (CGAET)                           | Vidyarthi Mithra         | Narayanadevarakere   |              |
|                                                   | Mobile Health unit , Health Camp under Arogya Mitra Yojan | Arogya Mithra            | Ayyanahalli          |              |
|                                                   | Mobile Health unit , Health Camp under Arogya Mitra Yojan | Arogya Mithra            | Narayanadevarakere   |              |
|                                                   | Mobile Health unit , Health Camp under Arogya Mitra Yojan | Arogya Mithra            | Lokappannahola       |              |
|                                                   | Drinking Water Tank Supply Mariyammanahalli               | Samajika Mithra          | Mariyammahalli       |              |
|                                                   | Honorarium to Guest teacher in Government schools         | Vidyarthi Mithra         | Marabbihala          |              |
|                                                   | Honorarium to Guest teacher in Government schools         | Vidyarthi Mithra         | Lokappannahala       |              |
|                                                   | Honorarium to Guest teacher in Government schools         | Vidyarthi Mithra         | Narayanadevarakere   |              |
|                                                   | Honorarium to Guest teacher in Government schools         | Vidyarthi Mithra         | Kenchantahalli       |              |
|                                                   | Honorarium to Guest teacher in Government schools         | Vidyarthi Mithra         | AK colony, M.M.Halli |              |
|                                                   | Honorarium to Guest teacher in Government schools         | Vidyarthi Mithra         | Mariyammahalli       |              |
|                                                   | Honorarium to Guest teacher in Government schools         | Vidyarthi Mithra         | Upanayakahalli       |              |
|                                                   | Honorarium to Guest teacher in Government schools         | Vidyarthi Mithra         | Lokappannahola       |              |
| Honorarium to Guest teacher in Government schools | Vidyarthi Mithra                                          | Priyankanagara.M.M.Halli |                      |              |

|                                                                |                                                                       |                    |                          |                     |
|----------------------------------------------------------------|-----------------------------------------------------------------------|--------------------|--------------------------|---------------------|
| <b>Jul-24</b>                                                  | Arogya mithra :Nutrition Food kit support to TB patients              | Arogya Mithra      | Mariyammahalli           | <b>26,18,844.00</b> |
|                                                                | Arogya mithra :Nutrition Food kit support to TB patients              | Arogya Mithra      | Baachikondanahalli       |                     |
|                                                                | Arogya mithra :Nutrition Food kit support to TB patients              | Arogya Mithra      | Maggimavanahalli         |                     |
|                                                                | Arogya mithra :Nutrition Food kit support to TB patients              | Arogya Mithra      | Hagarib ommahalli        |                     |
|                                                                | Arogya mithra :Nutrition Food kit support to TB patients              | Arogya Mithra      | Hampasagara              |                     |
|                                                                | Mobile Health unit , Health Camp                                      | Arogya Mithra      | Narayanadevarakere       |                     |
|                                                                | Mobile Health unit , Health Camp                                      | Arogya Mithra      | Lokappanahola            |                     |
|                                                                | Honorarium to Guest teacher in Government schools                     | Vidyarthi Mithra   | Upanayakahalli           |                     |
|                                                                | Honorarium to Guest teacher in Government schools                     | Vidyarthi Mithra   | Lokappanahala            |                     |
|                                                                | Honorarium to Guest teacher in Government schools                     | Vidyarthi Mithra   | Narayanadevarakere       |                     |
|                                                                | Honorarium to Guest teacher in Government schools                     | Vidyarthi Mithra   | Narayanadevarakere       |                     |
|                                                                | Honorarium to Guest teacher in Government schools                     | Vidyarthi Mithra   | Kenchantahalli           |                     |
|                                                                | Honorarium to Guest teacher in Government schools                     | Vidyarthi Mithra   | AK colony, M.M.Halli     |                     |
|                                                                | Honorarium to Guest teacher in Government schools                     | Vidyarthi Mithra   | Mariyammahalli           |                     |
|                                                                | Honorarium to Guest teacher in Government schools                     | Vidyarthi Mithra   | Kenchantahalli           |                     |
|                                                                | Honorarium to Guest teacher in Government schools                     | Vidyarthi Mithra   | Lokappanahola            |                     |
|                                                                | Honorarium to Guest teacher in Government schools                     | Vidyarthi Mithra   | Priyankanagara,M.M.Halli |                     |
|                                                                | Honorarium to Guest teacher in Government schools                     | Vidyarthi Mithra   | Lokappanahola            |                     |
|                                                                | Honorarium to Guest teacher in Government schools                     | Vidyarthi Mithra   | Ayyanahalli              |                     |
|                                                                | Honorarium to Guest teacher in Government schools                     | Vidyarthi Mithra   | Hosa ayyanahalli         |                     |
|                                                                | Honorarium to teacher in blind school (SLRM Saviour Charitable trust) | Vidyarthi Mithra   | Hospet                   |                     |
| Basic Computer training (CGAET)                                | Vidyarthi Mithra                                                      | Narayanadevarakere |                          |                     |
| Agricultural works                                             | Raitamitra                                                            | Lokappanahola      |                          |                     |
| Chaithanya Rural Development Educational Trust @ for Tailoring | Samajika Mithra                                                       | Narayanadevarakere |                          |                     |
| kere Development (197.05 H )                                   | Raitamitra                                                            | Lokappanahola      |                          |                     |
| RO water pipe line work @ village                              | Samajika Mithra                                                       | Lokappanahola      |                          |                     |

|                                                                |                                                                       |                    |                      |                     |
|----------------------------------------------------------------|-----------------------------------------------------------------------|--------------------|----------------------|---------------------|
| <b>Aug-24</b>                                                  | Arogya mithra :Nutrition Food kit support to TB patients              | Arogya Mithra      | Mariyammahalli       | <b>13,18,616.00</b> |
|                                                                | Arogya mithra :Nutrition Food kit support to TB patients              | Arogya Mithra      | Baachikondanahalli   |                     |
|                                                                | Arogya mithra :Nutrition Food kit support to TB patients              | Arogya Mithra      | Maggimavanahalli     |                     |
|                                                                | Arogya mithra :Nutrition Food kit support to TB patients              | Arogya Mithra      | Hagaribomahalli      |                     |
|                                                                | Arogya mithra :Nutrition Food kit support to TB patients              | Arogya Mithra      | Hampasagara          |                     |
|                                                                | Mobile Health unit , Health Camp                                      | Arogya Mithra      | Narayanadevarakere   |                     |
|                                                                | Mobile Health unit , Health Camp                                      | Arogya Mithra      | Lokappanahola        |                     |
|                                                                | Honorarium to Guest teacher in Government schools                     | Vidyarthi Mithra   | Upanayakahalli       |                     |
|                                                                | Honorarium to Guest teacher in Government schools                     | Vidyarthi Mithra   | Lokappanahala        |                     |
|                                                                | Honorarium to Guest teacher in Government schools                     | Vidyarthi Mithra   | Narayanadevarakere   |                     |
|                                                                | Honorarium to Guest teacher in Government schools                     | Vidyarthi Mithra   | Narayanadevarakere   |                     |
|                                                                | Honorarium to Guest teacher in Government schools                     | Vidyarthi Mithra   | Kenchantahalli       |                     |
|                                                                | Honorarium to Guest teacher in Government schools                     | Vidyarthi Mithra   | AK colony, M.M.Halli |                     |
|                                                                | Honorarium to Guest teacher in Government schools                     | Vidyarthi Mithra   | Mariyammahalli       |                     |
|                                                                | Honorarium to Guest teacher in Government schools                     | Vidyarthi Mithra   | Kenchantahalli       |                     |
|                                                                | Honorarium to Guest teacher in Government schools                     | Vidyarthi Mithra   | Lokappanahola        |                     |
|                                                                | Honorarium to Guest teacher in Government schools                     | Vidyarthi Mithra   | Priyankanagara       |                     |
|                                                                | Honorarium to Guest teacher in Government schools                     | Vidyarthi Mithra   | Lokappanahola        |                     |
|                                                                | Honorarium to Guest teacher in Government schools                     | Vidyarthi Mithra   | Ayyanahalli          |                     |
|                                                                | Honorarium to Guest teacher in Government schools                     | Vidyarthi Mithra   | Hosa ayyanahalli     |                     |
|                                                                | Honorarium to teacher in blind school (SLRM Saviour Charitable trust) | Vidyarthi Mithra   | Hospet               |                     |
|                                                                | Basic Computer training (CGAET) Narayadevarakere                      | Vidyarthi Mithra   | Narayanadevarakere   |                     |
|                                                                | Tricycles Distribution Programme Marabbihal,                          | Samajika Mithra    | Marabbihala          |                     |
| Chaithanya Rural Development Educational Trust @ for Tailoring | Samajika Mithra                                                       | Narayanadevarakere |                      |                     |
| Mobile phones to grama sahayakas of hb halli taluk (55 No,s)   | Samajika Mithra                                                       | Hagaribomahalli    |                      |                     |
| RO water pipe line work @ village                              | Samajika Mithra                                                       | Lokappanahola      |                      |                     |

|                    |                                                                       |                  |                          |              |
|--------------------|-----------------------------------------------------------------------|------------------|--------------------------|--------------|
| Sep-24             | Honorarium to Guest teacher in Government schools                     | Vidyarthi Mithra | Upanayakahalli           | 21,40,647.00 |
|                    | Honorarium to Guest teacher in Government schools                     | Vidyarthi Mithra | Lokappannahala           |              |
|                    | Honorarium to Guest teacher in Government schools                     | Vidyarthi Mithra | Narayanadevarakere       |              |
|                    | Honorarium to Guest teacher in Government schools                     | Vidyarthi Mithra | Narayanadevarakere       |              |
|                    | Honorarium to Guest teacher in Government schools                     | Vidyarthi Mithra | Kenchantahalli           |              |
|                    | Honorarium to Guest teacher in Government schools                     | Vidyarthi Mithra | AK colony, M.M.Halli     |              |
|                    | Honorarium to Guest teacher in Government schools                     | Vidyarthi Mithra | Mariyammahalli           |              |
|                    | Honorarium to Guest teacher in Government schools                     | Vidyarthi Mithra | Kenchantahalli           |              |
|                    | Honorarium to Guest teacher in Government schools                     | Vidyarthi Mithra | Lokappannahola           |              |
|                    | Honorarium to Guest teacher in Government schools                     | Vidyarthi Mithra | Priyankanagara,M.M.Halli |              |
|                    | Honorarium to Guest teacher in Government schools                     | Vidyarthi Mithra | Lokappannahola           |              |
|                    | Honorarium to Guest teacher in Government schools                     | Vidyarthi Mithra | Ayyanahalli              |              |
|                    | Honorarium to Guest teacher in Government schools                     | Vidyarthi Mithra | Hosa ayyanahalli         |              |
|                    | Honorarium to teacher in blind school (SLRM Saviour Charitable trust) | Vidyarthi Mithra | Hospet                   |              |
|                    | Basic Computer training (CGAET) Narayadevarakere                      | Vidyarthi Mithra | Narayanadevarakere       |              |
|                    | Chaithanya Rural Development Educational Trust ® for Tailoring        | Samajika Mithra  | Narayanadevarakere       |              |
|                    | Mobile Health unit , Health Camp under Arogya Mitra Yojan             | Arogya Mithra    | Narayanadevarakere       |              |
|                    | Mobile Health unit , Health Camp under Arogya Mitra Yojan             | Arogya Mithra    | Lokappannahola           |              |
| <b>Total</b>       |                                                                       |                  | <b>1,27,44,560.20</b>    |              |
| <b>Grand Total</b> |                                                                       |                  | <b>3,13,22,067.51</b>    |              |

## The 4 wings of SLRM CSR



**Vidhyarthi Mithra**



**Raitha Mithra**



**Arogya Mithra**



**Samajika Mithra**

- **Vidyarthi Mithra** : The concept is to promote quality of Education in rural area with infrastructure development, subject expert services, financial aid and capacity building of teachers.
- **Arogya Mithra** : The concept is to promote healthy behaviour in rural areas by generating awareness, conducting screening camps, appropriate referrals and in ensuring services are accessible.
- **Raitha Mithra** : The concept is to promote among rural youth to take up agriculture as profession by generating awareness, introducing modern technologies, and support with seeds/ saplings.
- **Samajika Mithra** : SLR Metallics C.S.R. The project has been providing financial assistance to various social programs in the villages under the company's reach for the development of the society, such as drilling borewells for drinking water, development of temples, renovation and construction of new buildings, financial assistance for local sports events, road construction, street lighting, afforestation, Several development programs like financial assistance for fairs and mass marriages, desilting of rivers, canals and wells for agriculture, skill development trainings and distribution of tools etc. SLR Metallics C.S.R organization has been working under Social Mitra scheme. Additionally all programs are currently in progress.



## Promoting Driving Training Class : Skill Development Training

ಬೆಂಗಳೂರು

# ಕೌಶಲ್ಯ ತರಬೇತಿಪಡೆದು ಸಬಲರಾಗಿ



**ಬೆಂಗಳೂರು ವಾರ್ತೆ**  
ಮರಿಯಮ್ಮನಹಳ್ಳಿ; ಹಣ, ಅಸ್ತಿ ಹೇಗೆ ಬೇಕಾದರು ಸಂಪಾದನೆ ಮಾಡಬಹುದು ಅದರ ಆರೋಗ್ಯ ಸಂಪಾದನೆ ಮಾಡುವುದಕ್ಕೆ ಸಾಧ್ಯವಿಲ್ಲ ಅದನ್ನ ಕಾಪಾಡಿಕೊಳ್ಳಬೇಕೆಂದು ಎಸ್.ಎಲ್.ಆರ್ ಮೆಟಾಲಿಕ್ಸ್ ಕಂಪನಿಯ ವ್ಯಕ್ತಿ ಡಾ.ಸೋಮಶ್ವರ ಹೇಳಿದರು.

ಅವರು ಸಮೀಪದ ಲೋಕಪ್ಪನಹೊಲ ಗ್ರಾಮದಲ್ಲಿ ಕಂಪನಿಯ ಸಿಎಸ್.ಆರ್ ಯೋಜನೆಯಡಿಯಲ್ಲಿ ಸಂಚಾರಿ ಆರೋಗ್ಯ ಘಟಕ ಮತ್ತು ನಿರುದ್ಯೋಗ ಯುವಕರಿಗೆ ಲಘು ವಾಹನ ಚಾಲನೆ ತರಬೇತಿ ಕಾರ್ಯಕ್ರಮಕ್ಕೆ ಸಹ ಚಾಲನೆ ನೀಡಿ ಮಾತನಾಡಿದರು.

ಮೊದಲು ನಾವು ಆರೋಗ್ಯಕ್ಕೆ ಒತ್ತು ನೀಡಬೇಕು, ಆರೋಗ್ಯ ಸದೃಢವಾಗಿದ್ದರೆ ನಮ್ಮ ಕುಟುಂಬ ಚೆನ್ನಾಗಿರುತ್ತದೆ ಹಾಗಾಗಿ ನಾವು ಆರೋಗ್ಯವನ್ನ ಚೆನ್ನಾಗಿ ಕಾಪಾಡಿಕೊಳ್ಳಬೇಕು, ನಾವು ಮೊದಲು ಆಸಕ್ತಿಗಳಿಗೆ

ಪಟ್ಟಣ ಮತ್ತು ನಗರ ಪ್ರದೇಶಗಳಿಗೆ ಹೋಗಬೇಕೆಂದು ಆದರೆ ಎಸ್.ಎಲ್.ಆರ್ ಕಂಪನಿಯು ಸಿಎಸ್.ಆರ್ ಯೋಜನೆ ಅಡಿಯಲ್ಲಿ ಸಂಚಾರಿ ಆಸಕ್ತಿ ಆರಂಭಿಸಿರುವುದರಿಂದ ಗ್ರಾಮೀಣ ಭಾಗದ ಜನರಿಗೆ ತುಂಬಾ ಅನುಕೂಲವಾಗಿದೆ ಜತೆಗೆ ಕೌಶಲ್ಯ ಭಿನ್ನ ಯೋಜನೆ ಅಡಿಯಲ್ಲಿ ಲೋಕಪ್ಪನಹೊಲ ಮತ್ತು ಅಯ್ಯನಹಳ್ಳಿ ಗ್ರಾಮದ ಸುಮಾರು 100 ಜನ ನಿರುದ್ಯೋಗಿ ಯುವಕರಿಗೆ ಲಘು ವಾಹನ ಚಾಲನೆ ತರಬೇತಿಯನ್ನ ನೀಡಲಾಗುತ್ತಿದೆ ಇದರ ಸದುಪಯೋಗ ಪಡೆದುಕೊಂಡು ಸಬಲರಾಗಿ ಎಂದರು.

ಈ ಸಂದರ್ಭದಲ್ಲಿ ಗ್ರಾಮ ಪಂಚಾಯತಿ ಸದಸ್ಯ ರಾಜ ಸೋಗಿ ನಾಗರಾಜ್, ಸೋಮಪ್ಪ ಹನುಮಂತಪ್ಪ ಸಿಎಸ್.ಆರ್ ಸಿಬ್ಬಂದಿಗಳಾದ ವಿಠಲ್.ಕೆ. ಮಲ್ಲಿಕಾರ್ಜುನ, ಮಾತಿಫೋಜಿ ಸೇರಿದಂತೆ ಸ್ಥಳೀಯರಿದ್ದರು.

Samajika Mitra: Conducting tailoring training sessions in the surrounding villages and distributed the machineries to the beneficiaries.



**SLR Metaliks Limited**  
Lokappana Hala, N.D. Kere, Hagaribommanahalli Tq. Vijayanagara Dist.

ಸಂಸ್ಥೆಯ ಸಾಮಾಜಿಕ ಜವಾಬ್ದಾರಿ (CSR) ಯೋಜನೆ ಅಡಿಯಲ್ಲಿ  
ಜೈತನ್ಯ ಗ್ರಾಮೀಣ ಅಭಿವೃದ್ಧಿ ವಿಜ್ಞಾಪಕೇಷನಲ್ ಟ್ರಸ್ಟ್ (೦)

ಇವರ ಸಹಯೋಗದೊಂದಿಗೆ

**ಉಚಿತ ಹೂಲಿಗೆ ತರಬೇತಿ ಶಿಬಿರ**



ಸ್ಥಳ : ನಾರಯಣದೇವರಕೇರೆ      ದಿನಾಂಕ : 06-06-2024



**Samajika Mitra: Conducting tailoring training sessions in the surrounding villages and distributed the machineries to the beneficiaries.**



**ಹೊಲಿಗೆ ತರಬೇತಿ ಉಚಿತ ಶಿಬಿರ**



ಹಗಲಿರುವುದು ಹೆಚ್ಚು: ಎಸ್ ಎಲ್ ಆರ್ ಕಂಪನಿ ಸಿಎಸ್ ಆರ್ ಯೋಜನೆಯಡಿ ಉಚಿತ ಹೊಲಿಗೆ ತರಬೇತಿ ಶಿಬಿರ ನಡೆಯಿತು.

**■ ಉದಯವಾಣಿ ಸಮಾಚಾರ ಹೆಗರಿನೊಮ್ಮನಹಳ್ಳಿ:** ಮಧ್ಯಮ ವರ್ಗದ ಜನತೆಯ ಆರ್ಥಿಕ ಸುಲಲತೆಗೆ ಉಚಿತ ಹೊಲಿಗೆ ಯಂತ್ರ ತರಬೇತಿ ಶಿಬಿರ ಸಹಕಾರಿಯಾಗಿದೆ ಎಂದು ಎಸ್ ಎಲ್ ಆರ್ ಮೆಟಾಲಿಕ್ಸ್ ನ ಸಿಎಸ್ ಆರ್ ನ ಮುಖ್ಯಸ್ಥ ಕೆ.ಎಸ್.ರಾಘವಾಂಕ ಹೇಳಿದರು.

ತಾಲೂಕಿನ ಉಪನಾಯಕನಹಳ್ಳಿಯಲ್ಲಿ ಸಿಎಸ್ ಆರ್ ಯೋಜನೆಯಡಿ ಚೈತನ್ಯ ಗ್ರಾಮೀಣ ಅಭಿವೃದ್ಧಿ ಎಜುಕೇಷನಲ್ ಟ್ರಸ್ಟ್ ಇವರ ಸಹಯೋಗದಲ್ಲಿ ಉಚಿತ ಹೊಲಿಗೆ ಯಂತ್ರ ತರಬೇತಿ ಶಿಬಿರವನ್ನು ಆವರಿಸಿ ಉದ್ಘಾಟಿಸಿ ಮಾತನಾಡಿದರು.

ಮಹಿಳೆಯರು ಉಚಿತ ಶಿಬಿರಗಳನ್ನು ಸದುಪಯೋಗ ಪಡಿಸಿಕೊಂಡು ಆರ್ಥಿಕವಾಗಿ ಸುಲಲರಾಗಬಹುದು, ಮಹಿಳೆಯರಲ್ಲಿನ ಅತ್ಯುನ್ನತ ಕೌಶಲಗಳನ್ನು ತರಬೇತಿಯಿಂದ ಮುನ್ನಲೆಗೆ ತರಬಹುದು ಎಂದು ಅವರು, ಸ್ವಂತ ಉದ್ಯೋಗಗಳನ್ನು ಸೃಷ್ಟಿಸಿಕೊಳ್ಳಬಹುದು ಎಂದರು.

ಚೈತನ್ಯ ಗ್ರಾಮೀಣಾಭಿವೃದ್ಧಿ ಎಜುಕೇಷನಲ್ ಟ್ರಸ್ಟ್ ನಿರ್ದೇಶಕ ಭವಾನಿ ರಾಜ ಮಾತನಾಡಿ ಸಮುದಾಯದ ಸರ್ವತೋಮುಖ ಅಭಿವೃದ್ಧಿಗಾಗಿ ಹಲವಾರು ವಿಶೇಷ ಸೇವೆಗಳನ್ನು ಉಚಿತ

ವಾಗಿ ಎಸ್ ಎಲ್ ಆರ್ ಕಂಪನಿಯ ಸಿಎಸ್ ಆರ್ ಯೋಜನೆ ರೂಪಿಸುತ್ತಿರುವ ಗ್ರಾಮೀಣ ಭಾಗದಲ್ಲಿನ ಮಹಿಳೆಯರು ಇದರ ಸದುಪಯೋಗವೆಂದುಕೊಂಡು ಅಭಿವೃದ್ಧಿ ಪಥದತ್ತ ಸಾಗಬೇಕೆಂದೆಂದು ಎಸ್ ಎಲ್ ಆರ್ ಕಂಪನಿಯ ಸಿಬ್ಬಂದಿ ಪ್ರಾಣಾ ನಾಯ್ಡು ಮಾತನಾಡಿ, ಕುಟುಂಬದ ಜವಾಬ್ದಾರಿಯನ್ನು ಕೇವಲ ಪುರುಷರ ಹೊಲಿಗೆ ಹೊರಿಸಿ, ಮಹಿಳೆ ಕೇವಲ ಮನೆಗೆಲಸದಲ್ಲಿ ನಿರತವಾದರೆ ಆರ್ಥಿಕ ಸುಲಲತೆಗೆ ಹಿನ್ನೆಡೆಯುಂಟಾಗುತ್ತದೆ ಎಂದರು.

ಶಿಬಿರಾರ್ಥಿ ಗಂಗೆಮ್ಮ ಮಾತನಾಡಿ, ಎಸ್ ಎಲ್ ಆರ್ ಕಂಪನಿಯ ಮಹಿಳೆಯರಿಗೆ ಹೊಲಿಗೆ ಯಂತ್ರ ತರಬೇತಿ ಉಚಿತವಾಗಿ ನೀಡುತ್ತಿರುವುದು ಶ್ಲಾಘನೀಯ ಎಂದರು.

ಎಸ್ ಎಲ್ ಆರ್ ಕಂಪನಿ ಸಿಬ್ಬಂದಿ ಕೆ.ಮಲ್ಲಿಕಾರ್ಜುನ, ಮಾರುತಿಭೋಗೇಡಿ, ಶಿವಕುಮಾರ ತಳವರ, ಟ್ರಸ್ಟ್ ನ ಸುಪರ್ಗಾಮ್, ಶಿಕ್ಷಕರಾದ ರಾಮಪ್ಪ, ಗ್ರಾ.ಪಂ ಸದಸ್ಯರಾದ ಜಿ.ಶಿಲ್ಪಾ ಪರಶುರಾಮ, ಸಕ್ರಾಳಗೋಕೇಪ್ಪ, ರೆವಿ ಮಲಿಗೆಮ್ಮ ಸಿದ್ಧಪ್ಪ, ಹನುಮಂತಪ್ಪ ಸೇರಿದಂತೆ ಗ್ರಾಮದ ಮುಖಂಡರು ಉಪಸ್ಥಿತರಿದ್ದರು. ಶಿಬಿರದಲ್ಲಿ 40 ಮಹಿಳೆಯರಿಗೆ ತರಬೇತಿ ನೀಡಲಾಯಿತು.



**Sماجیکا میترا:Conduct tailoring training sessions in the surrounding villages and distribute the machinery to the beneficiaries.**



**Raitamitra:**  
lift Irrigation canal work Kenchetanahlli, Varadapur, Nandibandi, Hampapatna and Kenchatanahalli thanda.





Raitamitra:

lift Irrigation canal work Kenchetanahlli, Varadapur, Nandibandi, Hampapatna and Kenchatanahalli thanda.



# Samajika Mitra: Supplied drinking water to villages of M.M.Halli and Byalakundi.



# Samajika Mitra: Providing drinking water for the public places during the summer season.



**Vidyarthi Mitra:**

Being donated a scholarship of Rs.1.17 lakhs to support poor students for their higher education.



# Vidyarthi Mithra:

The monthly salary honorarium is being donated to guest teachers in government schools.



Vidyarthi Mitra: Promoting Education from Kalika kendras Hindu Seva Prathistana and the monthly salary honorarium is being donated to guest teachers in government schools.







# Arogya Mitra: Organized Health camp at Health Camp at surrounding Villages.



# Arogya Mitra: Organized Health camp at Health Camp at surrounding Villages.





# Arogya Mitra: Nutrition food kits were donated to TB patients in surrounding villages on Monthly basis.



# Arogya Mitra: Nutrition food kits were donated to TB patients in surrounding villages on Monthly basis.





Samajika mitra:800No,s. plantations planted in GHP School Ayyanahalli, GHS Uppanayakanahalli, GTTC and GFG Collage of M.M Halli on the occasion of World Environment Day.



Samajika mitra:800No,s. plantations planted in GHP School Ayyanahalli , GHS Uppanayakanahalli, GTTC and GFG Collage of M.M Halli on the occasion of World Environment Day.



Samajika mitra:800No,s. plantations planted in GHP School Ayyanahalli , GHS Uppanayakanahalli, GTTC and GFG Collage of M.M Halli on the occasion of World Environment Day.



## ವಿಕಲಚೇತನರಿಗೆ ಅನುಕಂಪ ಬೇಡ ಅವಕಾಶ ಕೊಡಿ ನೇಮಿರಾಜ್ ನಾಯ್ಕ

■ ನಿರ್ದೋಷವಾಗಿ ಸಿದ್ದಿ, ಪುನರೇವುದ್ದಕ್ಕೂ ಎಸ್. ಎಲ್. ಆರ್. ಮೆಂಬರ್ಸ್‌ನಿಗೆ, ಕೆ. ಎಸ್. ಆರ್. ರೇಷಿಯಲ್ ಅಡಿಯಲ್ಲಿ ವಿಕಲಚೇತನರಿಗೆ ತ್ರಿಚಕ್ರ ವಾಹನ ವಿತರಣಾ ಕಾರ್ಯಕ್ರಮವನ್ನು ಸರ್ಕಾರಿ ಒಂದು ಪ್ರಾಥಮಿಕ ಹಂತ ಅಂದಲೂ ಮುಂದುವರಿಸಿ ಹಾಗೆಯೇ ಮುಂದುವರಿಸಿ ಪಾಲಿಸಿಯಲ್ಲಿ ಸಮಗ್ರೀಕರಿಸಿ.

ವಿಕಲಚೇತನರಿಗೆ ತ್ರಿಚಕ್ರ ವಾಹನಗಳನ್ನು ವಿತರಣೆ ಒಂದು ವಿಶೇಷ ಕಾರ್ಯಕ್ರಮವನ್ನು ಆಯೋಜಿಸಲಾಯಿತು. ಈ ಕಾರ್ಯಕ್ರಮದ ಮುಖ್ಯ ಉದ್ದೇಶವು ಆವರಣವಿಲ್ಲದ ಮತ್ತು ಸ್ವಾತಂತ್ರ್ಯವನ್ನು ಉತ್ತೇಜಿಸುವುದಾಗಿದೆ ಎಂದು ಎಸ್.ಎಲ್.ಆರ್. ಒಂದು ಆರೋಗ್ಯಕರವಾದ ಉಪಾಯವಾಗಿದೆ. ಕೆ.ಎಸ್. ಮಾತನಾಡಿ.

ಆವರಣವಿಲ್ಲದ ಅಧಿಗುಣ ಮತ್ತು ಫಲಾನುಭವಿಗಳನ್ನು ಸ್ವಾಗತಿಸಿ, ಕಾರ್ಯಕ್ರಮದ ಉದ್ದೇಶ ಮತ್ತು ಮುಖ್ಯವಸ್ತುಗಳನ್ನು ವಿವರಿಸಿದರು.

ಈ ಕಾರ್ಯಕ್ರಮವನ್ನು ಉದ್ದೇಶಿಸಿ ಆದ್ಯಕ್ಷಕ ಮಾತನಾಡಿದ ನೇಮಿರಾಜ್ ನಾಯ್ಕ ಅವರನ್ನು



ವಿಧಾನಸಭಾ ಕ್ಷೇತ್ರ ಹೆಗ್ಗುಡಿಯಲ್ಲಿ ನಡೆದ ಕಾರ್ಯಕ್ರಮದ ಸಂದರ್ಭದಲ್ಲಿ ನೇಮಿರಾಜ್ ನಾಯ್ಕ ಅವರನ್ನು ವಿತರಣೆ ಮಾಡಲಾಯಿತು.

ಮುಂಬರುವ ವಿಷಯಗಳಿಗೆ ಪ್ರಯೋಗ ಮಾಡಲು ಆವರಣವಿಲ್ಲದ ವಿಕಲಚೇತನರನ್ನು ಆವರಣವಿಲ್ಲದ ವಿಕಲಚೇತನರಿಗೆ ತ್ರಿಚಕ್ರ ವಾಹನ ವಿತರಣೆ ಕಾರ್ಯಕ್ರಮವನ್ನು ಆಯೋಜಿಸಲಾಯಿತು.

ಅಂದಿನಲ್ಲಿ 10 ಜನ ವಿಕಲಚೇತನರಿಗೆ ತ್ರಿಚಕ್ರ ವಾಹನ ವಿತರಣೆಯಾದುದು ಮುಖ್ಯವಾದುದು ಎಂದು ಈ ಸಂದರ್ಭದಲ್ಲಿ ತಿಳಿಸಿದರು. ಹಾಗೆ ಈ ತ್ರಿಚಕ್ರವಾಹನಗಳನ್ನು ನಿಮ್ಮ ನಿರೀಕ್ಷಿಸುವುದರಂತರ ಎಲ್ಲಾ ಫಲಾನುಭವಿಗಳು ತಾವೇ ಬಳಸಿಕೊಳ್ಳಬೇಕು ಎಂದು ತಿಳಿಸಿದರು.

ನಂತರ ಕಾರ್ಯಕ್ರಮದಲ್ಲಿ ಭಾಗವಹಿಸಿದ್ದ ಎಲ್ಲ ಗಣ್ಯವಾಹನದ ಸೇರಿ ತ್ರಿಚಕ್ರ ವಾಹನಗಳನ್ನು ವಿತರಣೆ ಮಾಡಿದರು.

ಈ ಸಂದರ್ಭದಲ್ಲಿ ವಿದ್ಯಾ ಆರ್. ಎಂ.ಎಂ. ಸಹಾಯಕ ನಿರ್ದೇಶಕರು ಕಾರ್ಯಕ್ರಮಕ್ಕೆ ಪ್ರೀತಿಗಳನ್ನು ಮತ್ತು ಸ್ವಾಸ್ಥ್ಯ ಇಡಬೇಕು ಬಯಸಿ, ಸಾರ್ವಜನಿಕ ಕಾರ್ಯಕ್ರಮವನ್ನು ಉತ್ತೇಜಿಸಬೇಕು, ಕಂಪನಿಯನ್ನು ಸ್ವಾಮ್ಯ ಪಡೆಯಬೇಕು ಆದ್ಯಕ್ಷಕ & ಸರ್ಕಾರದವರು, ಸಾರ್ವಜನಿಕ ಕಾರ್ಯಕ್ರಮವನ್ನು ಸಮರ್ಥಿಸಿ, ಮಾತನಾಡಿದರು. ವಾಲ್ಮೀಕಿ ಚೇತನ, ತಿರುಪತಿ ಮತ್ತು ಬೀದರ್ ಈ ಕಾರ್ಯಕ್ರಮದಲ್ಲಿ ಭಾಗವಹಿಸಿದ್ದರು.





SLR Metaliks  
Powered by Passion

ವಿನ್ ಎಲ್ ಆರ್ ಮೆಟಾಲ್ಸ್ ಲಿಮಿಟೆಡ್  
SLR Metaliks Limited  
Safe Steel, Green Steel, Clean Steel

CSR

ಸಿ.ಎಸ್.ಆರ್. ಯೋಜನೆ ಅಡಿಯಲ್ಲಿ  
ಅನುಷ್ಠಾನ ಸಂಸ್ಥೆ  
ಚೈತನ್ಯ ಗ್ರಾಮೀಣ ಅಭಿವೃದ್ಧಿ ವಿಜ್ಞಾನಕೇಂದ್ರ ಟ್ರಸ್ಟ್ (ಲಿ)  
ಸಹಯೋಗದೊಂದಿಗೆ  
ಗ್ರಾಮ ಸಹಾಯಕರಿಗೆ ಉಚಿತ ಮೊಬೈಲ್  
ವಿತರಣಾ ಕಾರ್ಯಕ್ರಮ  
ದಿನಾಂಕ : 21-08-2024  
ಸ್ಥಳ : ಹಗಲಿಬೊಮ್ಮನಹಳ್ಳಿ



# Vidya Mithra : Honorarium to Guest teacher in under vidhyarthi mithra yojana

1. Brail teacher 2. Computer teacher 3. Music teacher

